

THE WISCONSIN IDEA AT ITS MOST AUDIBLE



Photos: page 1 Jeff Miller, University Communications; page 2 Jeff Miller, University Communications; page 5 (clockwise) Jeff Miller, University Communications (1,2,4), Bryce Richter, University Communications (3); pages 8-9 Brian Heller; pages 10-11 Bryce Richter, University Communications; page 12 (clockwise): Jeff Miller, University Communications (1,2), Bryce Richter, University Communications (3), Brian Heller (4). Floor plans: pages 6-7 Strang, Inc.

MEAD WITTER SCHOOL OF MUSIC
HAMEL MUSIC CENTER
UNIVERSITY OF WISCONSIN-MADISON

CONTENTS

PAGE

3

Welcome to the Hammill Music Center:
A Letter from Susan C. Cook

4

Discover the Hammill Music Center:
A Self-Guided Tour

6

Floor Plans:
Mead Witter Foundation Concert Hall,
Collins Recital Hall, Sing Man & Florence
Lee/Annette Kaufman Rehearsal Hall,
The Lau & Bea Christensen Upper Lobby

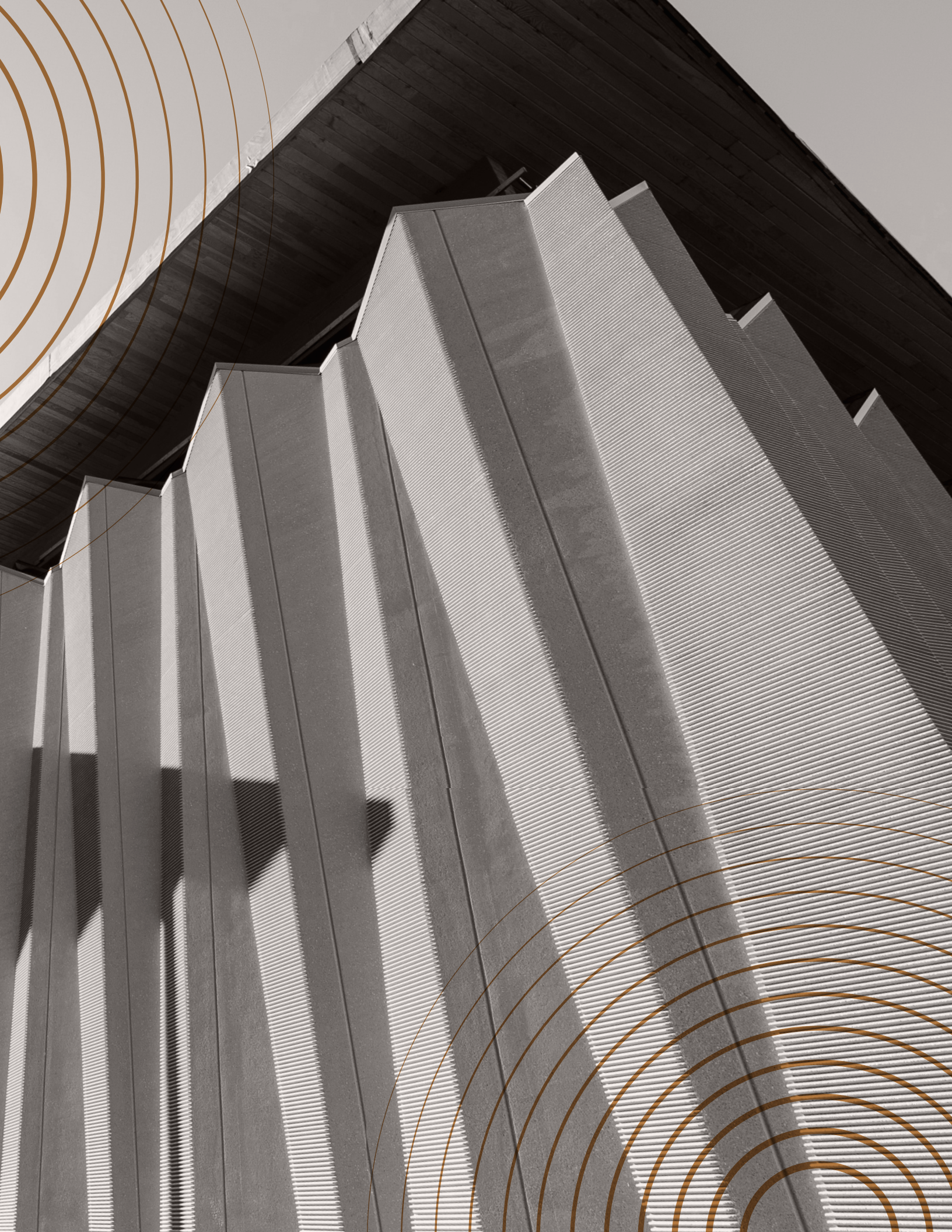
9

Built by Wisconsin Businesses
*"When you invest in UW-Madison,
you invest in the State of Wisconsin."*

11

Thank You to
Our Major Donors





WELCOME

TO THE HAMEL MUSIC CENTER

Look around. These warm and welcoming spaces, situated at the very entrance to the East Campus Gateway, will house UW–Madison’s greatest musical moments for decades to come.

Thanks to generous donors, devoted alumni, and music lovers around the world, this state-of-the-art facility will prepare students to perform at the highest of professional standards and provide audiences with an extraordinary listening experience. Through digital streaming technology, the Hamel Music Center will also better connect our partners and communities in Wisconsin and beyond with the Mead Witter School of Music’s compelling performances.

This truly is the Wisconsin Idea at its most audible — and you are part of its composition.

Susan C. Cook
Professor of Musicology
Pamela O. Hamel/Music Board of Advisors Director
Mead Witter School of Music
University of Wisconsin–Madison

DISCOVER THE HAMEL MUSIC CENTER: A SELF-GUIDED TOUR

Situated on a compact site next to a busy — and noisy — intersection, the Hamel Music Center is a thrilling achievement of visual and acoustic design. Sound engineers, acousticians, plumbing and mechanical experts, and other professionals worked alongside the architects and builders to design a structure to eliminate outside noise and ensure that each performance hall is acoustically isolated from the others. Learn more about what you will encounter as you explore this space.

EXTERIOR

The accordion-like exterior envelops 16-inch thick double walls that shield each hall from outside noise. The unique architectural precast panels were constructed by family-owned International Concrete Products, located in Germantown, Wisconsin. The building's roof is made of 50,000 pounds of poured concrete to further reduce noise.

COLORS

A signature element of architect Malcolm Holzman, the Hamel Music Center's bold color scheme takes its inspiration from Wisconsin's natural landscape. The rich plums, coppers, and golds reflect the life cycle of the maple, Wisconsin's state tree. Copper leafing in the concert hall was applied by Conrad Schmitt Studios of New Berlin, Wisconsin. The blues of the back-of-house spaces — such as offices, bathrooms, and dressing rooms — are a nod to Madison's beloved lakes.

LOBBY

Visible from University Avenue, the Hamel Music Center's two-story, glassed-in lobby connects all spaces in the building and welcomes passersby. The Lau & Bea Christensen Upper Lobby, accessible by an elevator and a curving central staircase, provides access to balcony seating in both the concert and recital halls. The terrazzo flooring of the central staircase was crafted by Johnson Terrazzo Company of Holmen, Wisconsin. Both the main and upper lobbies are intended to promote regular interaction between undergraduates, graduate students, and faculty. They also serve as elegant gathering spaces for pre- and post-concert receptions. Crowning the space is a custom copper pipe chandelier, a gift from the Class of 1965, crafted by third-generation family business Manning Lighting of Sheboygan, Wisconsin.

MEAD WITTER FOUNDATION CONCERT HALL

Seating up to 660 people, the main concert hall features an expansive stage with the capacity to house large ensembles of any kind — including the Varsity Band and UW–Madison Orchestra. The choir loft has three curved benches that accommodate up to 100 performers or may be used as audience seating. The circular panels along the walls are a series of acoustical coffers that absorb and reflect sound back into the concert hall. In addition, two 50,000 cubic-foot floating concrete reverberation chambers can be seen 30 feet up on each side of the concert hall stage. Both the concert hall and rehearsal hall are equipped with motorized, retractable curtains to adjust the level of “live” sound in the space. In the seating area, a lift is available on each side of the auditorium to enable patrons with limited mobility to access the front of the house. Personalized copper plaques on the backs of seats honor UW graduates, professors, and loved ones of Hamel Music Center supporters. Visit hmc.music.wisc.edu to learn more about naming a seat.

COLLINS RECITAL HALL

This two-story hall seats up to 300 people. In addition to hosting smaller-scale concerts, it is a performance space for Mead Witter School of Music undergraduates to perform capstone projects and graduate students to perform final doctoral recitals. Like the concert hall, the recital hall offers additional audience seating above the stage. Warm wooden elements include planks sourced from Menominee tribal lands, wooden petals on the lighting “tiaras” suspended from the ceiling, and framed glulam beams (laminated timber of exceptional strength) that support the cement ceiling. The hall's colorful and dynamic wallpaper was designed by Tandem Press founder and printmaker William Weege, professor emeritus of UW–Madison's Department of Art.

WALL OF HONOR

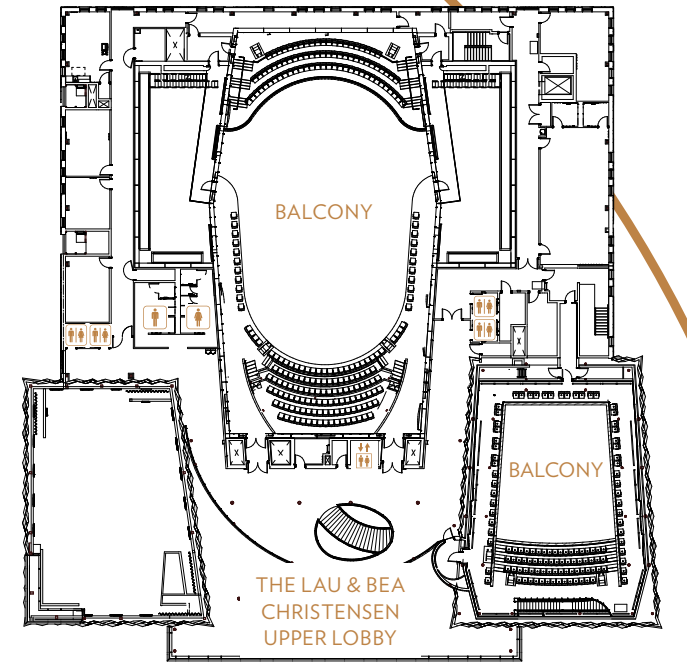
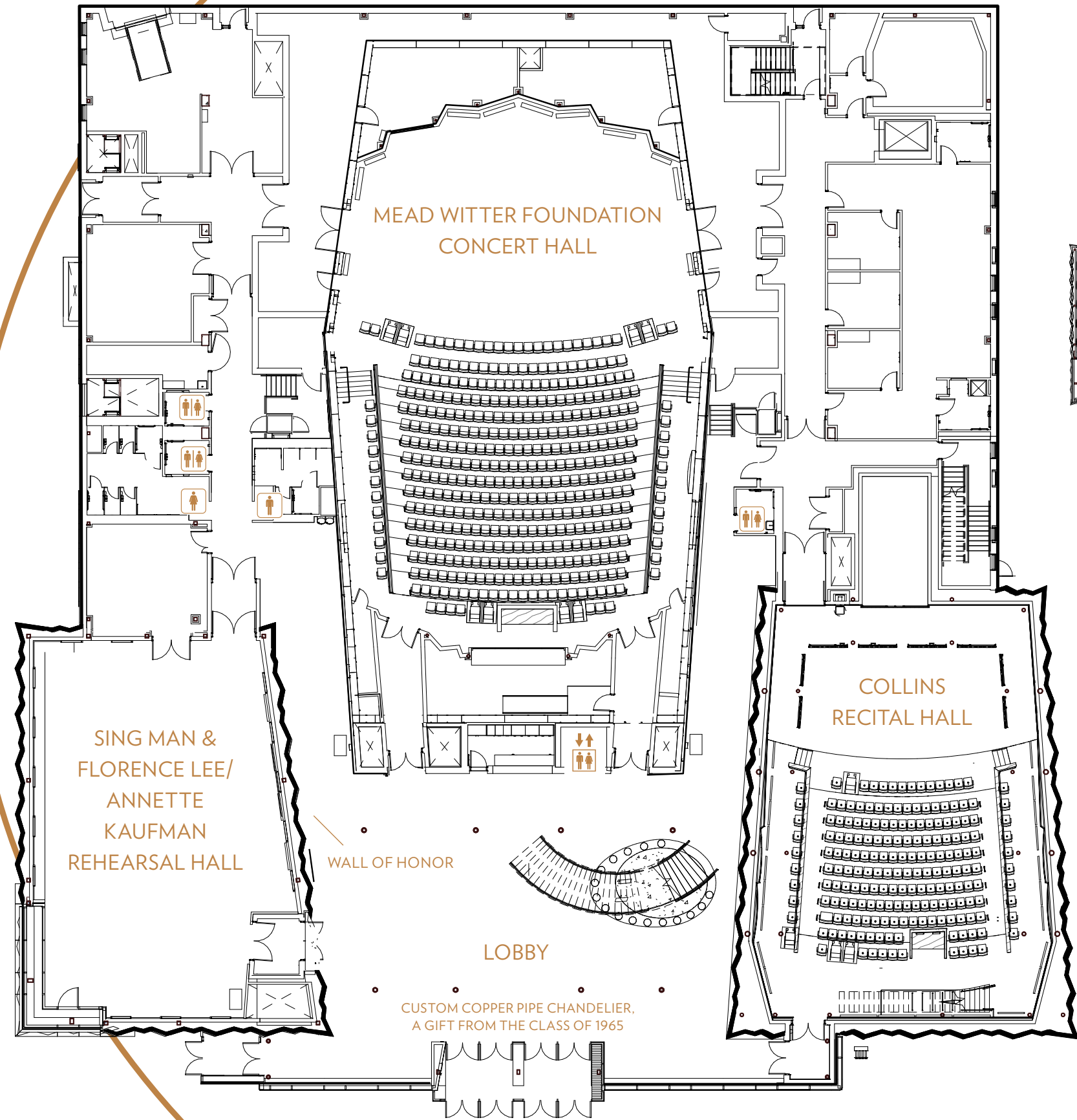
Flanking the rehearsal hall on the lobby's main floor, the Wall of Honor comprises a series of backlit, clear acrylic panels. This wall recognizes the building's major donors, whose names can also be found on page 11. It was crafted by La Crosse Sign Company.

SING MAN & FLORENCE LEE/ANNETTE KAUFMAN REHEARSAL HALL

The Lee/Kaufman Rehearsal Hall provides an attractive space that is large enough to accommodate the acoustic and physical demands of the Mead Witter School of Music's many large ensembles. The room's irregular shape and fabric-wrapped panels prevent the presence of standing sound waves. The distinctive west-facing corner window (actually double windows, with space between them to absorb sound vibration) allows passersby a view into the hall's activities and opens the building to the neighboring Chazen Museum of Art. This multiuse space will also host pre- and post-concert educational talks, events, and receptions.



THE HAMEL
MUSIC CENTER
FIRST FLOOR



SECOND FLOOR

DRESSING ROOMS

Two large dressing rooms, including the Daniel Gregg Myers Green Room, offer performers a comfortable space to congregate and warm up before performances. Friends and family can also gather in these spaces following performances.

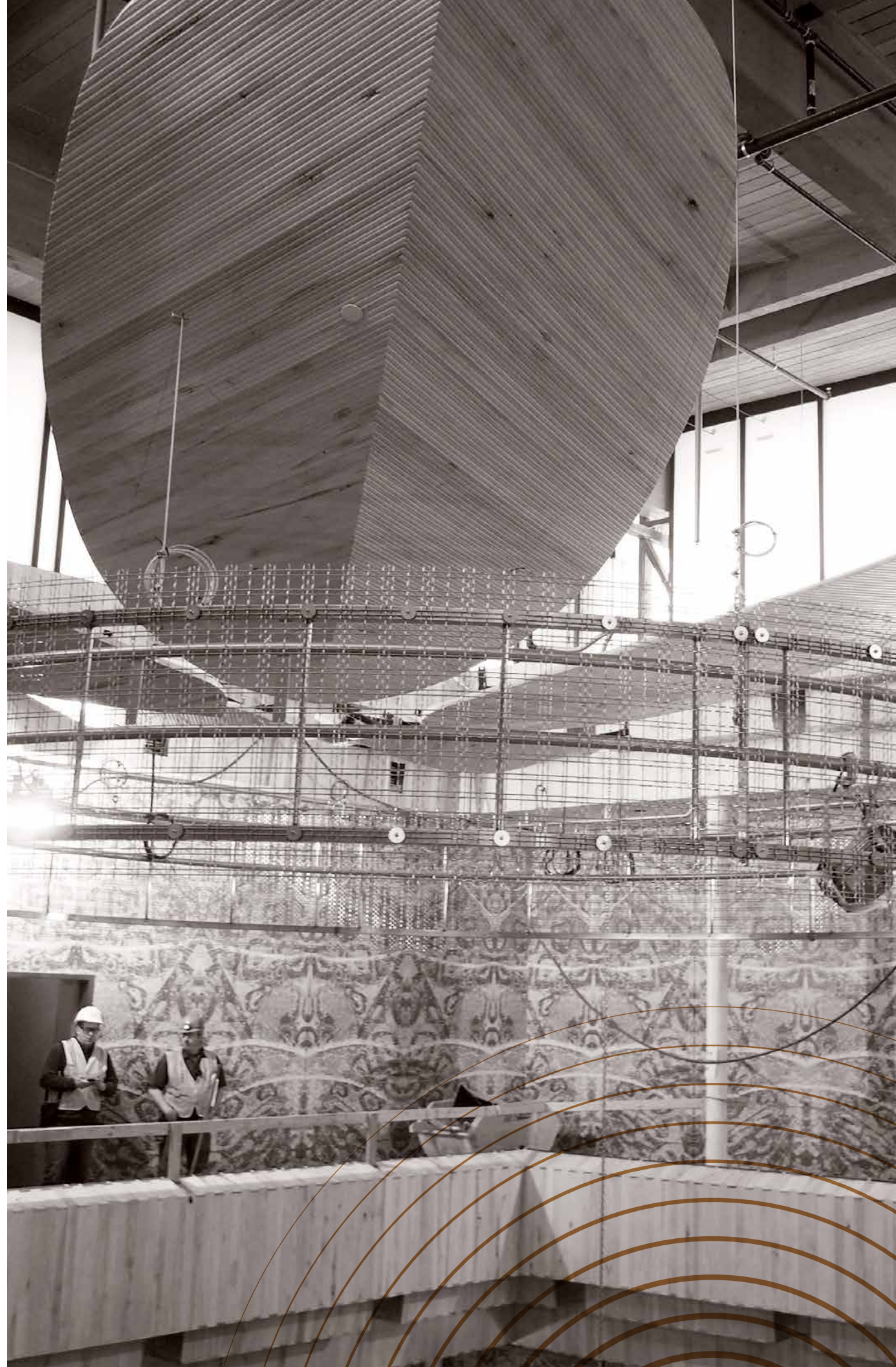
RECORDING STUDIO

As a learning lab for music students, the Hamel Music Center provides invaluable production experience. This includes access to a recording studio equipped with monitors, mixing boards, and cameras that allow for interaction with performing artists in the concert and recital halls.

MECHANICAL SYSTEMS

Plumbing and other mechanical systems are routed through corridors and back-of-house spaces to keep any noise or vibration from transferring to the structures surrounding the three music halls. Pipes are wrapped with additional insulation to absorb sound. To eliminate air noise while maintaining comfortable circulation in the Mead Witter Foundation Concert Hall, air is diffused from underneath the seats on the main floor and from the back of balcony seating instead of through large vents.

Gender-neutral and accessible bathrooms are available on both the main and upper floors.



BUILT BY WISCONSIN BUSINESSES

The generosity of private donors allowed us to build the Hamel Music Center entirely without state dollars. But that doesn't mean our fair state wasn't instrumental to its realization. Below are just some of the Wisconsin companies involved in the project. "It just goes to show," says School of Music director Susan C. Cook, "when you invest in UW-Madison, you invest in the State of Wisconsin."

Conrad Schmitt Studios, New Berlin
Full Compass Sound, Madison
General Heating and Air
Conditioning, Madison
The Hooper Corporation, Madison
International Concrete Products,
Germantown
Johnson Terrazzo Company, Holmen
JP Cullen, Madison
La Crosse Sign Company,
La Crosse
Manning Lighting, Sheboygan
Menominee Tribal Enterprises,
Neopit
Nickles Electric, Madison
R.A. Smith, Madison
Saiki Design, Madison
Strang, Inc., Madison
Vondra Engraving, Madison



THANK YOU TO OUR MAJOR DONORS

This beautiful building was made possible through the generous support of thousands of individuals and organizations. We would like to thank everyone who helped bring this space to life, with special gratitude to our major donors.

Mead Witter Foundation
Pamela O. Hamel and
George Hamel
Paul and Carol Collins
William F. Vilas Trust
Lau and Bea Christensen
Jun and Sandy Lee
JoAnne and Donald Krause
Annette Kauffman
Margaret C. Winston
Diane Endres Ballweg
W. Jerome Frautschi
Dr. Robert and Linda Graebner
Jon E. Sorenson and David E. Bedri
Chun C. Lin
Peter and Jill Lundberg
Susan and Jonathan Lipp
David Myers in honor of
Daniel Myers
Class of 1965

OUR SHARED FUTURE

As part of UW–Madison, the Hamel Music Center occupies ancestral land of the Ho-Chunk. Our shared future lies in fully understanding the Ho-Chunk Nation’s history of resistance and resilience. The Mead Witter School of Music is committed to advancing conversations and actions that move us “from ignorance to awareness,” as recently advocated by Chancellor Rebecca Blank.

Please join us for future Mead Witter School of Music concerts and events.
Learn more at music.wisc.edu/events.

