

**ALL WAYS FORWARD®**  
FOR TODAY'S UW AND TOMORROW'S WORLD



THE MEAD WITTER SCHOOL OF MUSIC  
**HAMEL MUSIC CENTER**  
UNIVERSITY OF WISCONSIN-MADISON



**DEAR FRIEND OF UW-MADISON,**

Making music at the University of Wisconsin–Madison deserves a special place all its own. I am pleased to announce that in 2019, the Hamel Music Center will open its doors.

Located along the East Campus Gateway, the Hamel Music Center will welcome visitors with an inviting structure built with a friendly footprint. At the heart of the Mead Witter School of Music, the Hamel Music Center will provide faculty and students with state-of-the-art performance and educational spaces, and music enthusiasts with an extraordinary acoustic environment and a lively and welcoming atmosphere.

Our dream for an exceptional, accessible, and sustainable music venue is coming true thanks to lead donors such as the Mead Witter Foundation of Wisconsin Rapids, Pam and George '80 Hamel, Paul Collins '58, the generous members of the school's board of advisors, and others. Naming opportunities remain for donors who, like you, appreciate our Wisconsin Idea mission of connecting students, faculty, and our larger community with first-rate, innovative music performance and instruction. It is an extraordinary moment, years in the making, ready for you to take your part in the composition.

Join us as we usher in the next century of music at UW–Madison.

**SUSAN C. COOK**

Pamela O. Hamel/Music Board of Advisors Director  
Mead Witter School of Music  
University of Wisconsin–Madison





HIGH-TECH AND HIGH-TRAFFIC

# REAL-WORLD CLASS



*The Hamel Music Center will be a shining example of functional beauty.*

## ACTIVE LEARNING IN AN ACTIVE SPACE

As a learning laboratory for music performance and instruction, the Hamel Music Center will bolster the Mead Witter School of Music's enviable reputation for real-world, student-centered education.

Outstanding acoustic and lighting technology will prepare students to perform at the highest of professional standards and allow faculty to offer exceptional and innovative educational experiences.

True to our land-grant mission, our enhanced capacity to prepare, present, and capture UW-Madison's greatest musical moments will enable us to share our gifts far beyond the borders of campus.







## IN TUNE WITH TODAY

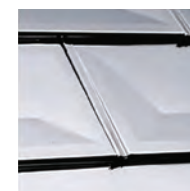
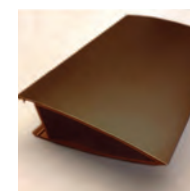
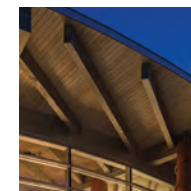
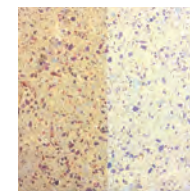
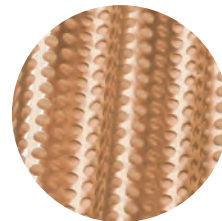
*A welcoming environment for  
experiencing exceptional music*

### EXCEPTIONAL AND ELEGANT

The Hamel Music Center's premier performance spaces will surround visitors with exceptional acoustics, warm lighting, and hues inspired by the seasonal shades of the sugar maple, Wisconsin's state tree.

The Collins Recital Hall (facing page), seating more than 300, will envelop audiences with warm wood and custom wallpaper.

The Mead Witter Foundation Concert Hall (this page), seating more than 600, will feature rich colors and copper accents. Its expansive stage will accommodate large ensembles of any kind.



## CRAFTED TO LAST

### PRACTICAL AND FUNCTIONAL

With a nod to the Prairie School, the Hamel Music Center's sustainable footprint, natural materials, and custom design will harmonize the building with its surroundings and provide a durable and inspired setting for years of daily use.

*It will be a building that reflects  
the values of Wisconsin and its  
flagship university.*





# BUILDING—AND BUILT FOR— OUR COMMUNITY

## EVENTS, RECEPTIONS, AND MORE

As a central and lively gathering space, the Hamel Music Center is designed to host a range of events — from formal recitals and daily instruction to elegant receptions and pre- and post-concert educational talks.

Sited prominently on the corner of University Avenue and Lake Street, the building's sparkling, two-story lobby will beckon passersby with its magnificent staircase and chandelier — a gift from the Class of 1965.

Looking onto the campus's arts corridor, the large-ensemble rehearsal hall will interact with its environs through a large picture window, framing the space from both inside and out.

*This jewel of the East Campus Gateway will welcome visitors into a bustling arts corridor.*

*The stunning chandelier will be a gift from the Class of 1965.*

*The glass-enclosed two-story lobby will feature a magnificent central staircase.*





# A FRONT-ROW SEAT ON CAMPUS

## MEGAN MITCHELL

Megan Mitchell x'18 is pursuing a double major in vocal performance and interior architecture. As both a musical and visual artist, she eagerly anticipates the many ways in which the Hamel Music Center will benefit students.

### LAUDABLY AUDIBLE

"Any good musician knows that in order to be an excellent and well-rounded performer, listening is a major part of the equation. If you thought we sounded good in the Mills Concert Hall and Morphy Recital Hall, we'll be even more fabulous in our new halls."

### SHEDDING SOME LIGHT

"I know I speak for all students when I say it will be nice to see the light of day again, especially when it comes to the rehearsal hall. As much as we love the [Mosse] Humanities Building and the learning environment our professors and instructors provide, it has been challenging to spend much of our day in downstairs classrooms that have no windows."

### FRONT AND CENTER

"Music students of this generation have watched other schools and colleges at UW-Madison upgrade their facilities. We are excited to study and perform in this highly visible, beautiful building. The Hamel Music Center will give today's students and faculty, as well as future generations of musical Badgers, a front-row seat on campus."

Megan Mitchell (left) and Olivia Sellman x'21

*"If you thought we sounded good in the Mills Concert Hall and Morphy Recital Hall, we'll be even more fabulous in our new halls!"*





# SET YOUR NAME TO MUSIC

## HAMEL MUSIC CENTER NAMING OPPORTUNITIES

From individual chairs or sections of chairs to educational venues and prominent gathering spaces, opportunities remain to support the enhancement and stewardship of the Hamel Music Center.

### WALL OF HONOR

Gifts of \$50,000 and greater will be recognized on the prominent Wall of Honor in the first-floor lobby. Elegant inscriptions will be etched into clear acrylic and set against the pre-cast concrete walls.

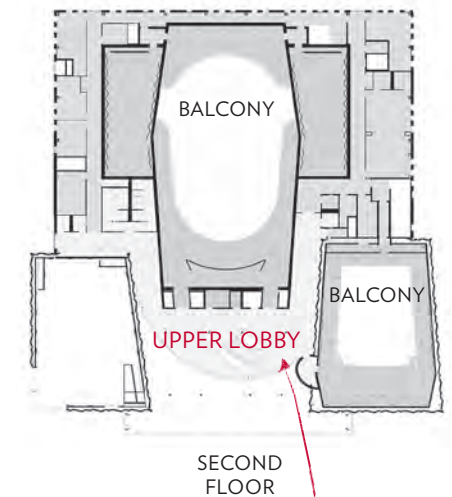
### REHEARSAL HALL

The large-ensemble rehearsal hall will house continual activity and creative inspiration. With its distinctive corner window looking onto an arts plaza, this multi-use space will host pre- and post-concert educational talks, events, and receptions.

### SEATS AND SECTIONS

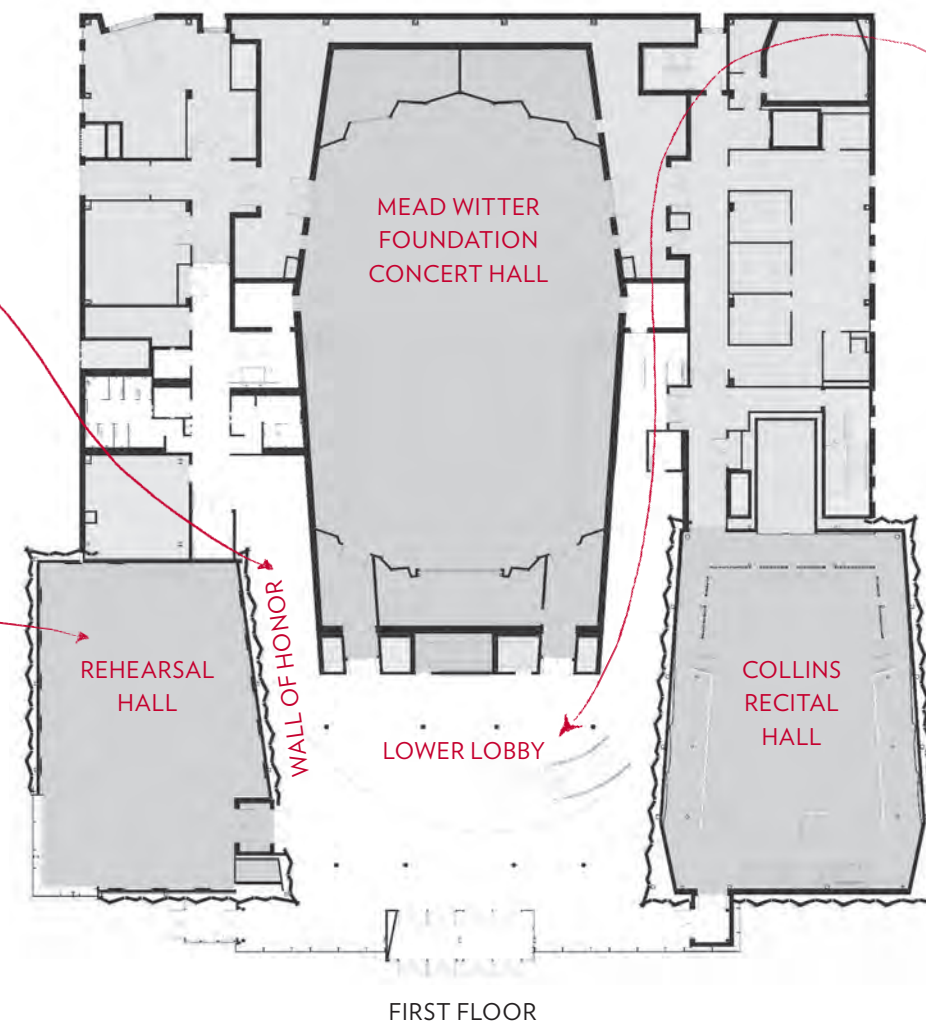


With a gift of \$1,500, one seat back will be affixed with a metal plaque engraved with your name (or a name of your choosing).



### LOWER AND UPPER LOBBIES

The dramatic, two-story lobby will welcome all who attend performances. Showcasing the central staircase and sparkling chandelier, both the lower and upper lobbies will be ideal for hosting receptions and special events.





# REACHING BEYOND THE LIMITS

---

The Hamel Music Center will be a premier performance and educational venue. Opening in 2019, the center will provide students in the Mead Witter School of Music with the highest standards of acoustical, recording, and lighting technology. As a warm and inviting gathering space with the capacity to capture and digitally stream performances, it will also welcome the larger arts community, today and well into the future.

Rebekah Sherman '99  
rebekah.sherman@supportuw.org  
608-572-2077

**ALLWAYSFORWARD.ORG**

Architectural renderings, material photos, and floor plans: courtesy of Holzman Moss Bottino Architecture (design architect) in association with Strang (architect of record); photos: Bryce Richter, University Communications (pages 4, 5, 10 [clockwise from top left, 1, 2, 3, 5]); Dan Pomykalski (page 10 [clockwise 6]); Michael R. Anderson (pages 10 [clockwise 4], 11).





Mead Witter School of Music  
UNIVERSITY OF WISCONSIN-MADISON



ALL WAYS  
**FORWARD®**

[ALLWAYSFORWARD.ORG](http://ALLWAYSFORWARD.ORG)

