



University of Wisconsin
Population Health Institute
UNIVERSITY OF WISCONSIN
SCHOOL OF MEDICINE AND PUBLIC HEALTH

2020

ANNUAL REPORT

Table of Contents

Executive Summary	2
About the UW Population Health Institute	12
Strategic Priority I: Population Health and Equity Research	16
Strategic Priority II: Partnerships for Action	19
Strategic Priority III: Advancing a Health and Racial Equity Narrative	23
Strategic Priority IV: Health and Racial Equity Innovation	26
Appendix A: Select Grants	30
Appendix B: Partners	31
Appendix C: UW Population Health Institute Staff	34
Appendix D: Select Publications and Events	36
Contact	38

Land Acknowledgment Statement



The UW Population Health Institute occupies Ho-Chunk Land, a place their nation has called Teejop (Day-JOPE) since time immemorial. In 1832, the Ho-Chunk were forced to surrender this territory. Decades of ethnic cleansing followed when both the federal and state government repeatedly, but unsuccessfully, sought to forcibly remove the Ho-Chunk people from Wisconsin.

This history of colonization informs our shared future of building partnerships that prioritize respect and meaningful engagement. The staff of the institute respects the inherent sovereignty of the Ho-Chunk Nation, along with the eleven other First Nations of Wisconsin.

We carry this land acknowledgment into our work to operationalize our values by considering the many legacies of violence, erasure, displacement, migration, and settlement. We carry these truths as we work to make positive change. Please join us in uncovering these truths every day.

Copy writing by Strong Suit Communications. Graphic design by SMPH Media Solutions.
Photography by Shutterstock and iStock. UW campus photography by Jeff Miller, UW-Madison.

2020

**ANNUAL
REPORT**

Executive Summary



What is Health Equity?

“Health equity is defined as the absence of unfair and avoidable or remediable differences in health among population groups defined socially, economically, demographically or geographically.”

– World Health Organization

Power: The Capacity to Act

“We can define power as the capacity to act, individually and collectively. Power at the social and institutional level can be understood as the capacity to distribute and access resources, the capacity to shape agendas and the capacity to define the narrative or worldview.”

– 2020 Health Equity Training Modules from the University of Wisconsin Population Health Institute’s Mobilizing Action Toward Community Health (MATCH)



Messages from Dean Golden and Director Johnson



Robert N. Golden, MD

Greetings,

Together, we weathered many storms in 2020. The School of Medicine and Public Health is grateful for the opportunity to work alongside local, state and

national leaders to advance a just

recovery. Our vision is for healthy people and communities, where everyone thrives.

The Population Health Institute is demonstrating critical leadership in these unprecedented times. Building upon its strong foundation, including its origins within our Department of Population Health Sciences, the institute is expanding partnerships and networks as it catalyzes innovation. Our commitment to supporting the creation of equitable conditions for everyone to be healthy remains strong. We know that courage and collaboration are keys to success.

On Wisconsin.

Sincerely,

Robert N. Golden, MD

Dean, School of Medicine and Public Health
Vice Chancellor for Medical Affairs
University of Wisconsin-Madison



Sheri Johnson, PhD

Dear colleagues and partners,

I am proud to share the University of Wisconsin Population Health Institute's 2020 annual report. In it,

we not only highlight our

accomplishments and contributions

during this most challenging year, but also illustrate how these activities advance the objectives, vision and priorities outlined in our strategic plan.

This report is structured around the institute's four strategic goals: Population Health and Equity Research; Partnerships for Action; Advancing a Health and Racial Equity Narrative; and Racial Equity Innovation. Together, they underscore our commitment to translate research about population health for use in policy and practice and to address the ways in which the distribution and unethical use of power results in systematic differences in how long and how well people live.

This is at the heart of health equity. Only by identifying and dismantling the systems, policies and practices that create and maintain stark imbalances in power can we catalyze the emergence and implementation of transformative solutions.

This pandemic has not only reminded us of how much we need one another, but also of how much we can accomplish together. Thank you for your partnerships, your expertise and your support as we work together to advance knowledge, practice, policy and systems change.

Sheri Johnson, PhD

Director, Population Health Institute
Associate Professor (CHS), Department of Population Health Sciences
University of Wisconsin School of Medicine and Public Health



The University of Wisconsin Population Health Institute

Translating Research for Policy and Practice

Since 2005, the University of Wisconsin Population Health Institute has collaborated with partners at the local, state and national level to help communities identify, evaluate, track and shape the many factors that influence people's health and wellbeing.

Originally housed within the Department of Population Health Sciences, we continue to leverage the expertise of faculty and students.

By providing evidence-informed strategies, actionable data and other resources tailored to myriad sectors, we equip people with the best possible tools and resources to build equitable systems, structures and policies.

By valuing partnerships and facilitating the exchange of expertise about health between and among those within the university and our many partners, we expand our understanding of what drives health equity.

And by shifting narrative and sharing stories that name what works — and what is needed — to ensure everyone's wellbeing, we support nationwide efforts that improve health and advance our understanding of what it takes to achieve health equity.

We believe that only by working together toward a world in which we value one another and honor our connectedness will we achieve the healthiest possible conditions for all of us.



University of Wisconsin
Population Health Institute
UNIVERSITY OF WISCONSIN
SCHOOL OF MEDICINE AND PUBLIC HEALTH



Vision

We work toward a world in which we value each other, honor our connectedness and build communities where everyone can thrive.

Mission

We accelerate the capacity to create equitable conditions for everyone to be healthy by advancing knowledge, practice, policy and systems change across sectors.

Values

- **Collaboration:** Build and sustain diverse partnerships that prioritize respect, mutual benefit and meaningful engagement
- **Integrity:** Ensure that we are honest, accountable and responsible with the power we have
- **Excellence:** Aim high, seek feedback and continually improve
- **Innovation:** Create, test, refine and promote new ideas and approaches at the leading edge
- **Inclusion:** Ensure work has a wide reach, is meaningful, accessible and impactful
- **Courage:** Seek diverse perspectives and experiences that challenge our assumptions and worldviews, recognize systemic harms, and commit to making positive change, even when it is uncomfortable



University of Wisconsin
Population Health Institute
UNIVERSITY OF WISCONSIN
SCHOOL OF MEDICINE AND PUBLIC HEALTH



Strategic Priorities

I. Population Health and Equity Research

We advance the field with a Population Health and Equity Research Agenda (PHERA) that brings science, evidence and conceptual frameworks into a new era by bringing community priorities to the forefront and by addressing the complexity of historical context, power dynamics and identities in shaping health and equity.

II. Partnerships for Action

We build, strengthen and align our partnerships to advance strategies that shape new narratives and action, and increase collective accountability.

III. Advancing a Health and Racial Equity Narrative

We cultivate strong narratives and strategic communications to name what it takes to achieve health and racial equity.

IV. Health and Racial Equity Innovation

We commit to becoming a racially equitable and inclusive organization, joining and supporting other organizations on their journey.



Programs

County Health Rankings & Roadmaps

The [County Health Rankings & Roadmaps](#) program helps communities use data and identify solutions that create conditions for people to be healthy in their homes, schools, workplaces and neighborhoods. Ranking the health of nearly every county in the nation, the County Health Rankings illustrate what we know when it comes to what is making people sick or healthy. The Roadmaps show what we can do to create healthier places to live, learn, work and play. The Robert Wood Johnson Foundation funds the UW Population Health Institute to bring this program to towns, cities and counties across the nation.

Evaluation Research

[Evaluation Research](#) partners with community, tribal, county and state governmental agencies to develop, implement and evaluate local and state programs in public health and human services. The team also collaborates with national researchers, practitioners, and faculty and staff within the University of Wisconsin on evaluation research projects. The team's evaluators can advise on and implement a broad range of applied research methods, from qualitative and descriptive techniques to complex experimental and quasi-experimental trials. We also engage in rigorous intervention research design and evaluation. Our portfolio of evaluation projects reflects the full range of systems and health factors that contribute to population health and wellbeing.

Evidence-Based Health Policy Project

The [Evidence-Based Health Policy Project](#) historically has worked to connect research and expertise from the university and community into the health-policy-making process at the Wisconsin State Capitol. Significant staffing and partnership changes occurred at the end of 2019 and through the first half of 2020. These changes resulted in a pause of traditional programming and revisioning of the project's approach.

We pivoted our focus to COVID-19 in 2020, and utilized our strong partnerships and reputation to support a more explicit focus on research and practice evidence to inform policies intended to advance health and racial equity across sectors. We developed a "Just Recovery for Racial Equity" policy brief that summarizes evidence to support a just and equitable recovery from COVID-19.



The brief outlines evidence-informed policies and practices and provides background and context for the need to center racial equity in a just recovery so that communities can be more resilient in the face of health-based emergencies and help all Wisconsinites to thrive. This work is expected to set the stage for long-term community resilience during recovery.

Mobilizing Action Toward Community Health (MATCH)

[MATCH](#) collaborates with partners around the state to support and catalyze community-driven efforts that address root causes of health inequities. Through training, engaged research and development, and strategic alliances, we take shared action in areas such as criminal justice, community development and housing. Working at multiple levels, we partner with diverse leaders, including those in public health, planning, community organizing, research and philanthropy.

Robert Wood Johnson Foundation (RWJF) Culture of Health Prize

The [RWJF Culture of Health Prize](#) honors and elevates U.S. communities that are working at the forefront of advancing health, opportunity and equity for all. When we celebrate communities' successes, affirm their direction, inspire other local places and provide ideas about what's possible, we help ensure that all people have a fair and just opportunity to live their healthiest lives possible. Leaders from the Prize-winning communities have opportunities to connect with other national and local leaders working to build a Culture of Health.

Partnerships

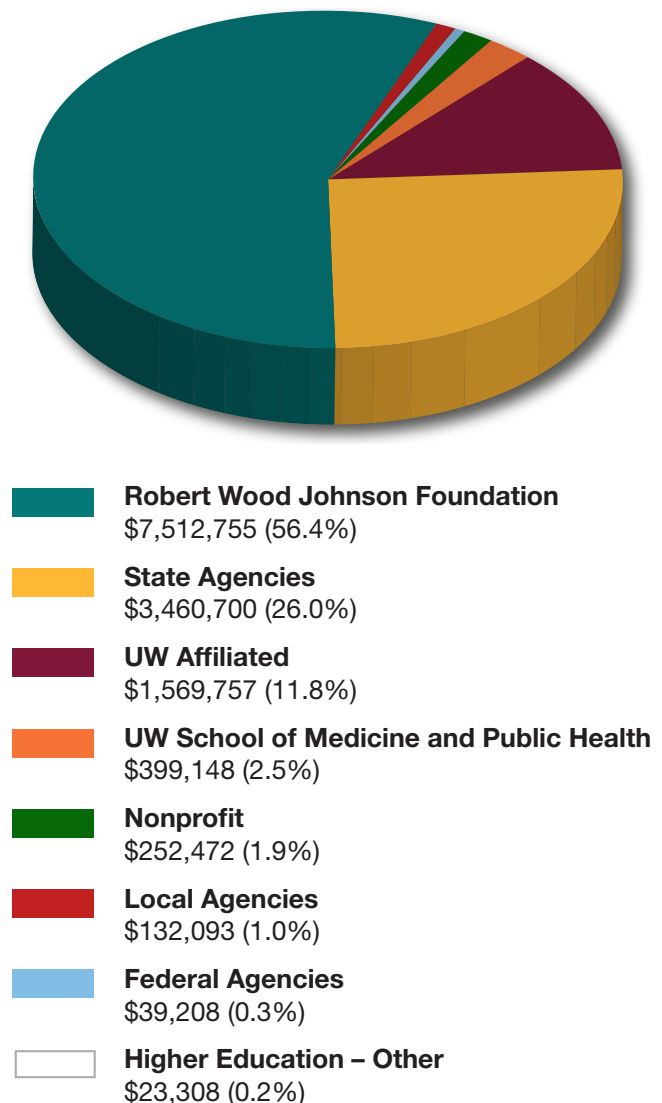
Our collaborations — some funded, some in-kind and some simply collegial — include partners in the public, private and nonprofit sectors. Along with other departments and centers in the university, we work with community members, government agencies, businesses, advocates and organizations at the national, state and local level to advance health for all.

In 2020 the UW Population Health Institute collaborated with more than 200 partners. See Appendix B for more information.

Growing for Impact

Over the last decade, the UW Population Health Institute's budget has more than doubled, from less than \$5 million in 2010 to approximately \$13 million in 2020. As investors in our mission, our funding partners are integral to ensuring the health and wellbeing of all by advancing evidence-informed research for both policy and practice.

Calendar Year 2020 Funding Sources



This graph summarizes each funding source as a percentage of the institute's total budget. See Appendix A for a list of select grants.

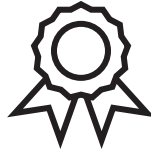


By the Numbers



400+

HEALTH STRATEGIES
IN WHAT WORKS FOR
HEALTH (WWFH)



44

**RWJF CULTURE OF
HEALTH PRIZE
COMMUNITIES**



200

**COMMUNITY PARTNERS
AND PARTNER
ORGANIZATIONS**



82

PROGRAMS/GRANTS



13

FELLOWS
WISCONSIN POPULATION
HEALTH SERVICE
FELLOWSHIP PROGRAM



125

INSTITUTE STAFF



7128

**COUNTY HEALTH RANKINGS
& ROADMAPS**
WEBINAR ATTENDEES



1.65M+

ONLINE VIEWS
OF COUNTY HEALTH RANKINGS MEDIA
COVERAGE AND ALMOST 128,000
SOCIAL MEDIA SHARES



98+463

98 ORGANIZATIONS AND 463 INDIVIDUALS SIGNED ON TO THE DECLARATION THAT
[RACISM IS A PUBLIC HEALTH CRISIS IN WISCONSIN.](#)



Community Resilience and Response Task Force: Equity in COVID-19 Response

Every Wisconsinite deserves a fair opportunity to be healthy. Our recovery from the pandemic will only be effective if it addresses the inequities that existed before COVID-19. This includes the distributions of wealth, power and influence by geography, social class, race and ethnicity that have led to inequities in the social determinants of health.

In 2020, the UW Population Health Institute provided leadership and integral staff support to the [Community Resilience and Response Task Force \(CRRTF\)](#) — a collaboration with the Wisconsin Department of Health Services, the UW–Madison Division of Extension and the Governor’s Office. CRRTF was established to integrate community resilience, equity and mental health across Wisconsin’s COVID-19 response.

CRRTF’s work included connecting communities, organizations and networks to public health expertise, resources and support. CRRTF aimed to set the stage for more resilient post-COVID-19 Wisconsin communities through promoting policy and practice decisions and interventions that support every community in reaching its full health potential. The work was centered in the belief that those who face the greatest adverse health impacts should be involved in designing strategies to address them.

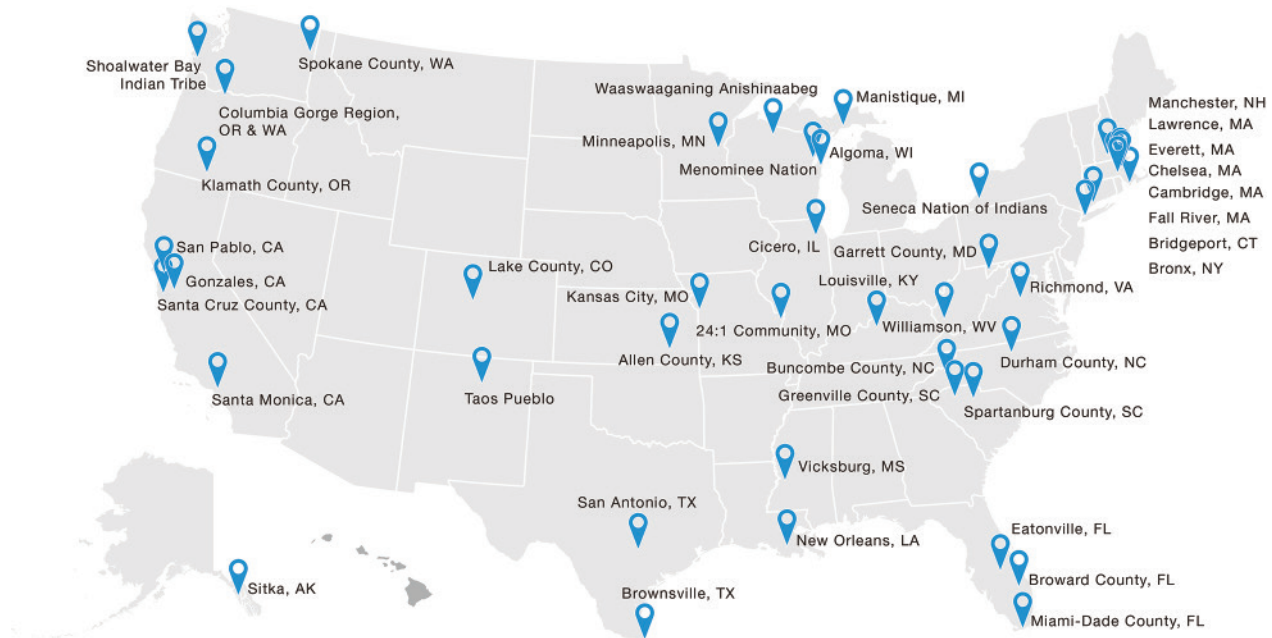
CRRTF embedded community resilience and equity in the response by utilizing a Sector Support Process. This process engaged key stakeholders across Wisconsin to identify (1) needs and assets in the community, (2) strategies to address the needs and (3) ways to hold each other accountable.

CRRTF prioritized key sectors and communities for this work based on inequities that would likely occur due to the nature of the COVID-19 pandemic, including:

- Populations living in congregate settings, such as those incarcerated, in long-term care, assisted living and community-based care
- Residents with unmet and/or accessibility needs related to transportation, food, housing, language access, civic participation and information channels (for example: populations in rural areas facing geographic inequities, spiritual leaders and communities, individuals and families facing interpersonal violence or mental/behavioral health issues and individuals with disabilities)
- Critical services workforces, such as those in law enforcement, first responders, community health workers, migrant workers and other locally identified essential workforces

Recognizing that health inequities existed prior to COVID-19 as symptoms of structural racism and historical disinvestment from communities, CRRTF worked to support communities in making equitable policy and practice decisions that addressed these structures and set the stage for post-COVID-19 resilience. For a snapshot of the work and resources provided to key sectors, see the [CRRTF Sector Support Summary](#).

Working together across sectors, we have the resources, knowledge and power to create more equitable communities where everyone has a fair opportunity to be healthy.

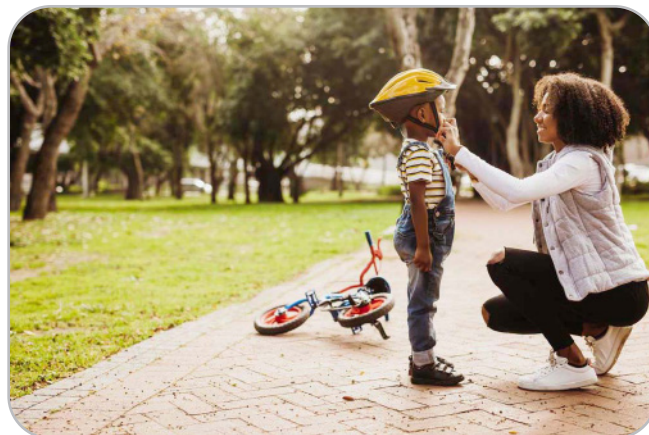


RWJF Culture of Health Prize Winners 2013-2019

Eight Years Leading the RWJF Culture of Health Prize

The UW Population Health Institute has collaborated with the Robert Wood Johnson Foundation (RWJF) on the [RWJF Culture of Health Prize](#) since its inception in 2013. For the first time in eight years and due to COVID-19, the selection of the 2020 winners was postponed until 2021. Considering this delay, the institute stepped up its efforts to build community with the 44 past Prize winners in several ways:

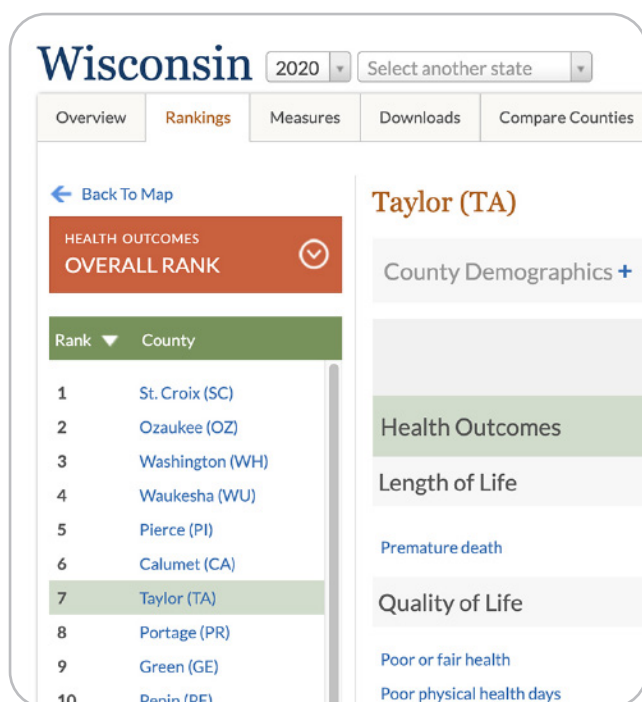
- By co-hosting a two-day national virtual convening, Community Conversations for Transformative Times, featuring local leaders across the nation speaking to timely topics including: addressing systemic racism; responding to and recovering from COVID-19; and how young leaders are changing their communities.
- By supporting community leaders in building their national networks through monthly virtual meetings and regular communication. Through our facilitation efforts, leaders across the country provided support for one another through the pandemic, sharing real-time issues and potential solutions related to COVID-19. A summary of those exchanges resulted in the article, [“What It Looks Like to Build a Culture of Health During COVID-19,”](#) and pointed to the importance of leveraging cross-sector partners for rapid adaptive solutions, standing up community-wide responses and ensuring access to essential resources for all.
- By producing and disseminating a report on the 2019 RWJF Culture of Health Prize-winning communities and how they are advancing equity. Highlights from this report include communities ensuring opportunities for residents to influence solutions, maximizing environmental resources to increase sustainability and economic vitality, and addressing racism and historical trauma to foster inclusion and cultural resilience.
- By partnering with Project Evident, a national organization working to harness the power of evidence to drive greater outcomes, to offer a series of trainings and individualized consulting for past Prize-winning communities.
- By supporting local leaders' participation in and the design of an assessment with Community Science to learn how applying for or winning the Prize fits into a community's trajectory of addressing health, opportunity and equity.



What Works For Health: An Online Tool

[What Works for Health \(WWFH\)](#), part of the County Health Rankings & Roadmaps program, is an easy-to-use online tool to help communities find policies, programs and systems changes that are effective in altering the factors that make communities healthier places. By sharing strategies that are tested for effectiveness and shown to work, WWFH helps communities identify policies and programs that align to community priorities.

More than 400 policies and programs are searchable by keyword (e.g., mental health, nutrition), topic (e.g., education, community safety), decision maker (e.g., government, business) or evidence rating. When combined with the County Health Rankings & Roadmaps information, this resource provides a snapshot of a county's current health and information on strategies that can be used to advance overall health in communities.



10 Years of County Health Rankings & Roadmaps

The UW Population Health Institute has published the Wisconsin County Health Rankings since 2003. In 2010, the institute began collaborating with the Robert Wood Johnson Foundation to produce the national [County Health Rankings](#) for the majority of counties in all 50 states. The Key Findings Report, County Snapshots and resources for taking action are available at www.countyhealthrankings.org.



University of Wisconsin
Population Health Institute
UNIVERSITY OF WISCONSIN
SCHOOL OF MEDICINE AND PUBLIC HEALTH

2020

**ANNUAL
REPORT**

About the UW Population Health Institute



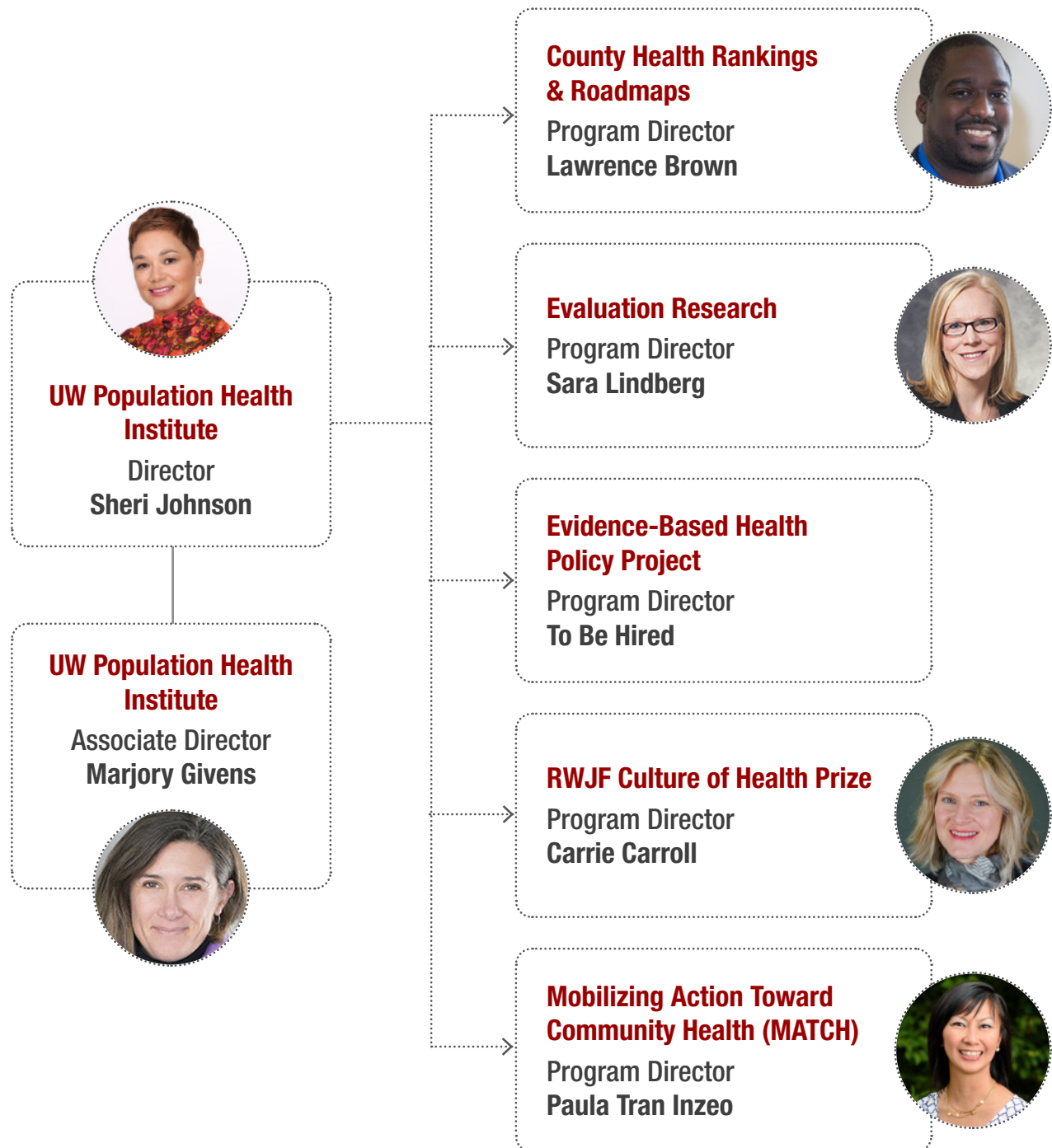
The University of Wisconsin Population Health Institute has existed in various organizational forms since 1984, adopting our current name as the University of Wisconsin Population Health Institute in 2005. We are part of the growing academic medical center (AMC) ecosystem of population health departments, and a member of a national network of non-profit organizations dedicated to advancing public health practice.

Our ties to the Department of Population Health Sciences, and all the assets across the University of Wisconsin, are essential to our success. Led by a team of experts well-recognized in their field, the University of Wisconsin Population Health Institute is committed to integrity and excellence. With a bold spirit of courage, innovation and inclusion, we advance knowledge, practice, policy and systems change across sectors of population health.



Organizational Chart

Below is our organizational chart. See Appendix C for the complete list of UW Population Health Institute staff.





Community Advisory Board

The UW Population Health Institute Community Advisory Board comprises individuals from health care, public health, state government, business, environmental advocacy, community-based organizations, education and other sectors. Meeting three times per year, the board guides the work of the institute and provides feedback on its programs and publications.

Laila Azam

Clinical Assistant Professor of Public Health Studies
Carroll University

Tim Bartholow

Vice President and Chief Medical Officer
WEA Trust

Eric Borgerding

President and CEO
Wisconsin Hospital Association, Inc.

Michael DeGere

Vice President
Population Health Management at SSM Health Wisconsin

Kurt Eggebrecht

Health Officer
Appleton City Health Department

Nate Gilliam

Organizer
Wisconsin Federation of Nurses and Health Professionals

LaTonya Johnson

Senator
Wisconsin State Senate

Debra Kolste

Representative
Wisconsin State Assembly

Jeanette Kowalik

Commissioner of Health
Milwaukee Health Department

Kathy Loppnow

Health Occupation Education Director
Wisconsin Technical College System

Gregory Nycz

Director
Family Health Center of Marshfield

Walter Orzechowski

Executive Director
Southwestern Wisconsin Community Action Program

Andrea Palm

Secretary-Designee
Wisconsin Department of Health Services

Lisa Peyton-Caire

President
The Foundation for Black Women's Wellness

Christopher Queram

President and CEO
Wisconsin Collaborative for Healthcare Quality

Mark Redsten

President and CEO
Clean Wisconsin

Jessie Rodriguez

Representative
Wisconsin State Assembly

Ayaz Samadani

Family Physician
SSM Health Dean Medical Group

Tim Size

Executive Director
Rural Wisconsin Health Co-op

Patrick Testin

Senator
Wisconsin State Senate

Jesi Wang

President and CEO
MetaStar, Inc.

Executive Committee

The UW Population Health Institute Executive Committee provides guidance to the director on the institute's performance by, for example, reviewing goals and objectives and evaluating accomplishments throughout this annual report.

Maureen Durkin, PhD, DrPH

Chair, Department of Population Health Sciences
Professor of Population Health Sciences and Pediatrics
UW School of Medicine and Public Health

Jonathan Jaffery, MD

Chief Population Health Officer
President, UW Health Accountable Care Organization

Tom Oliver, PhD, MHA

Professor, Department of Population Health Sciences
UW School of Medicine and Public Health

**Patrick Remington, MD, MPH**

Professor Emeritus, Department of Population Health Sciences
 Director, Preventive Medicine Residency Program
 UW School of Medicine and Public Health

Maureen A. Smith, MD, MPH, PhD

Professor, Departments of Population Health Sciences and Family
 Medicine and Community Health
 Director, Health Innovation Program
 Director, Community-Academic Partnerships Core, UW Institute
 for Clinical and Translational Research
 UW School of Medicine and Public Health

Barbara (Bobbi) Wolfe, PhD

Richard A. Easterlin Professor of Economics, Population Health
 Sciences and Public Affairs
 UW La Follette School of Public Affairs

Susan Zahner, DrPH, MPH, FAAN

Associate Dean for Faculty Affairs
 Vilas Distinguished Achievement Professor
 UW School of Nursing

Affiliated Faculty

Faculty who are designated as “affiliated” collaborate on funded projects or collaborate to extend the teaching, research or service mission of the UW Population Health Institute.

Jennifer Edgoose, MD, MPH

Associate Professor, Department of Family Medicine and
 Community Health
 UW School of Medicine and Public Health
 Affiliation: Navigator Evaluation and Diversity and Inclusion
 Advocates Evaluation

Deborah Ehrenthal, MD, MPH, FACP

Associate Professor and Lifecourse Initiative for Healthy Families
 Endowed Chair
 Departments of Population Health Sciences and Obstetrics and
 Gynecology
 UW School of Medicine and Public Health
 Affiliations: Preceptor, Population Health Service Fellowship

David Kindig, MD, PhD

Emeritus Professor, Department of Population Health Sciences
 Emeritus Vice-Chancellor, Health Sciences
 UW School of Medicine and Public Health
 Affiliation: Making Wisconsin the Healthiest State Project

Jane Mahoney, MD

Professor, Department of Medicine
 UW School of Medicine and Public Health
 Affiliation: Community-Academic Aging Research Network
 Evaluation

Kristen Malecki, PhD, MPH

Associate Professor, Department of Population Health Sciences
 UW School of Medicine and Public Health
 Affiliation: Breast Cancer and the Environment Research Program

D. Paul Moberg, PhD

Research Professor, Department of Population Health Sciences
 UW School of Medicine and Public Health
 Affiliation: Evaluation Research

Tom Oliver, PhD, MHA

Professor, Department of Population Health Sciences
 UW School of Medicine and Public Health
 Affiliation: Principal Investigator, Population Health Service
 Fellowship

Patrick Remington, MD, MPH

Professor Emeritus, Department of Population Health Sciences
 Director, Preventive Medicine Residency Program
 UW School of Medicine and Public Health
 Affiliation: Principal Investigator, Population Health Service
 Fellowship

Joel Rogers, PhD, JD

Sewell-Bascom Professor of Law, Political Science, Public Affairs,
 and Sociology
 Director, Center on Wisconsin Strategy
 Affiliation: Legacy Communities Alliance for Health

Maureen Smith, MD, MPH, PhD

Professor, Departments of Population Health Sciences and Family
 Medicine and Community Health
 Director, Health Innovation Program
 Director, Community-Academic Partnerships Core, UW Institute
 for Clinical and Translational Research
 UW School of Medicine and Public Health
 Affiliation: Neighborhood Health Partnership

Geof Swain, MD, MPH

Former Medical Director (retired), City of Milwaukee Health
 Department
 Professor Emeritus, Department of Family Medicine and
 Community Health
 UW School of Medicine and Public Health
 Affiliation: Population Health Service Fellowship

Amy Trentham-Dietz, PhD

Professor, Department of Population Health Sciences
 Program Leader, Cancer Control Program, Carbone Cancer Center
 UW School of Medicine and Public Health
 Affiliation: Breast Cancer and the Environment Research Program

2020

ANNUAL
REPORT

Strategic Priority I: Population Health and Equity Research



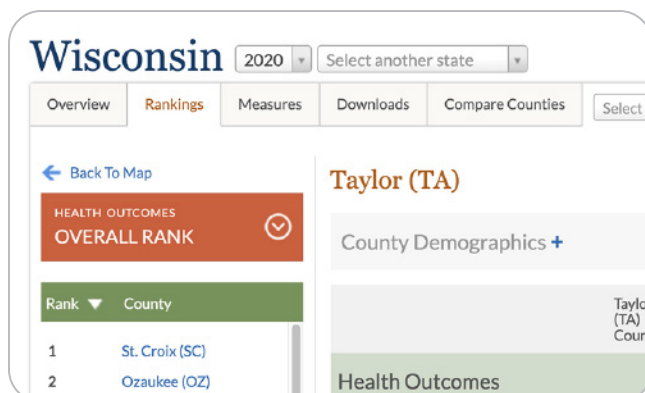
We advance the field with a Population Health and Equity Research Agenda (PHERA) that brings science, evidence and conceptual frameworks into a new era by bringing community priorities to the forefront and by addressing the complexity of historical context, power dynamics and identities in shaping health and equity.

For nearly four decades, the UW Population Health Institute has produced scholarship and practice on conceptual frameworks. Together, we are considering what frameworks and data platforms we want to build in order to better reflect community priorities.

Our research agenda expands the way that we understand and curate evidence and positions the institute to bring community priorities to the forefront. And through our narrative work we identify ways to address complex factors that shape health and equity.



Signature Program



2020 County Health Rankings & Roadmaps Reports

Each year, nearly [every county in all 50 states](#) is ranked for the many factors that influence health, including educational attainment, employment, housing, transportation and more. The 2020 Rankings highlight how health outcomes and health factors differ among neighboring counties within each state and illustrate how opportunities for health differ among population groups within counties.

[Reports of key findings](#), first released in 2010, the County Health Rankings & Roadmaps' national findings illustrate trends and long-standing drivers of population health and equity. Recent reports have featured counties that are among the least healthy and urged action to reshape community conditions; for example, addressing discriminatory laws and policies that underlie current opportunities for health. By pairing data with this context, the key findings help us work together to address the impacts of racism and discrimination.

Ongoing Research

Literacy Link

Literacy Link: Building Evidence for Early Intervention to Disrupt Intergenerational Disadvantage Caused by Incarceration is a pilot program of the UW–Madison Division of Extension. It brings evidence-informed literacy and learning opportunities to young children with parents or family members impacted by incarceration. Evaluation Research is providing Literacy Link with evaluation and strategic consulting.

From Punishment to Restoration

The UW Population Health Institute leads the study, *From Punishment to Restoration: Building a Base of Leaders Impacted by Incarceration to Advance Just and Healthy Communities*, a grant from the Robert Wood Johnson Foundation.

As part of an enduring partnership with EX-incarcerated People Organizing (EXPO), WISDOM and researchers at the UW Population Health Institute, this project reviews the base-building methodologies led by EXPO from 2012–2019. Through this research, the institute lives its values around equity through centering the voices and leadership of those most impacted by the incarceration system. The research examines the process, infrastructure and relationship building methodologies used to develop and sustain EXPO and how the experiences of justice-involved individuals have shaped base-building methodologies. The project advances engaged scholarship that grows our understanding of the culture and contextual dimensions of engaging, developing and mobilizing community leaders with criminal histories. It begins to uncover base-building methodologies that can shift structural targets for policy and systems change to focus more systematically on cultivating conditions that restore communities. This work was highlighted in [a local media story](#).

Census to Census Project

The institute is collaborating with the City of Madison on the evaluation of the Census to Census Project — a 10-year, in-depth evaluation of the impact of the city's innovative investment strategy to support racial equity and inclusion and increased economic and overall wellbeing for current residents of a specific geographic area.

The primary goal of the evaluation is to understand the effect that these investments have on the current residents, with the goal of stemming displacement and gentrification and then applying learnings from this project to other similar investment strategies throughout the city. The project uses a participatory action evaluation methodology that prioritizes the current residents of South Madison as central decision-makers in the development and implementation of the evaluation study, as well as allocation of Tax Incremental Financing (TIF) investments made midway through the study.



Publications

Leading Health Indicators

Johnson S, Gold MR, Baciu A.

[Rethinking the leading health indicators for Healthy People 2030.](#) *JAMA Health Forum*. Published online May 20, 2020.

UW Population Health Institute director Sheri Johnson served on the committee that proposed a new set of Leading Health Indicators (LHIs) in alignment with the Healthy People 2030 framework. The proposed LHIs are intended to reflect a balanced set of factors that contribute to overall health and drive equity. As such, the proposed indicators go beyond specific diseases to include social determinants of health and other structural factors. While selecting a limited set of LHIs for the nation is challenging, the National Academies committee sought to provide forward-thinking indicators that aligned with the Healthy People 2030 framework: equity, wellbeing along the lifespan and broad engagement.

A Health Equity Mindset

Johnson S, Golden RN.

[A health equity mindset.](#) *Wisconsin Medical Journal*. 2020;119(2):139-140.

Sheri Johnson, director of the UW Population Health Institute, and Robert Golden, dean of the UW School of Medicine and Public Health, acknowledge the challenges of reducing health inequities and commit to implementing solutions that will create healthy and safe communities for all.

Generating Subcounty Health Data Products

Nguyen TQ, Michaels IH, Bustamante-Zamora D, et al.

[Generating subcounty health data products: Methods and recommendations from a multi-state pilot initiative.](#) *Journal of Public Health Management and Practice* Jan/Feb 2021; 27(1): E40-E47.

In partnership with groups in New York, California and Montana, scholars in the UW Population Health Institute explored practice-relevant research regarding ways to approach the conceptual development, analysis and presentation, and positioning for sustainability of local data that can shine a light on health inequities. This research highlights key considerations for practitioners working to disaggregate data within counties as a means to effectively explore and evaluate health data that can inform action.

Impact Of Community Resource Program

Bryant A, Walsh-Felz A, Jacklitz, Lindberg, S.

[The impact of a community resource navigator program on patient trust.](#) *Wisconsin Medical Journal*. 2020;119(3):190-193.

As part of the UW School of Medicine and Public Health Shapiro Summer Research Program in 2018, and in collaboration with the UW Population Health Institute and the Center for Patient Partnerships (CPP), medical student Alex Bryant, a volunteer with the Community Resources Navigator Program, evaluated the impact of the program related to patient needs and patient trust. The evaluation showed that the program helped participants feel valued and strengthened their relationships with their provider. As a result of conducting the evaluation, and collaboration among multiple UW entities, this endeavor also supported expanding a medical student's research repertoire by incorporating qualitative methods as a rich way to learn about clinical interactions and to provide program feedback. This paper is part of a larger collaboration between the institute and CPP to evaluate the effectiveness of the Community Resource Navigator Program as a service to address patient wellbeing and the impact of the program for students on experiential learning.

The 2019 Behavioral Health Gaps Report for the State of Wisconsin

Vigna, AJ, Connor T.

[The 2019 behavioral health gaps report for the State of Wisconsin.](#) Madison, WI: University of Wisconsin Population Health Institute, October 2020. [Final Report](#) | [Technical Appendices](#)

The Bureau of Prevention, Treatment and Recovery in the Wisconsin Department of Health Services (DHS) commissioned a Behavioral Health Gaps Study to conduct a multi-method assessment of the gaps and needs in the behavioral health service system for individuals with mental health and Substance Use Disorder needs.

While previous assessments relied on existing data from state and federal data systems to assess the gaps and needs, the Behavioral Health Gaps Study collected the knowledge and experience of stakeholders.

These included public and private providers, advocates and consumers, including those from a variety of historically underserved populations.

2020

**ANNUAL
REPORT**

Strategic Priority II: Partnerships for Action



We build, strengthen and align our partnerships to advance strategies that shape new narratives and action, and increase collective accountability.

By building, aligning and strengthening our existing partnerships, the UW Population Health Institute is shaping new narratives and actions together, augmenting our accountability to community priorities.

In turn, as our credibility and legitimacy in the field of population health and equity grows, we embrace the opportunity to encourage the accountability of others who join our efforts.



COVID-19 Response and Recovery



Community Resilience and Response Task Force Sector Engagement

As part of its COVID-19 Rapid Response and Just Recovery efforts, the [Community Resilience and Response Task Force](#) (CRRTF), led by the UW Population Health Institute, worked in collaboration with the Wisconsin Department of Health Services, UW–Madison Division of Extension and the Governor’s Office to engage partners across over a dozen sectors across the state to create and disseminate stakeholder-specific tools and resources to embed equity in COVID-19 response and Just Recovery Efforts in Wisconsin. (See p. 9 for more information about CRRTF.) The following resources are being used by diverse sectors across the state as well as some national partners.

- [Community Resilience, Equity and Mental Health Considerations in Rapid Response](#)

Provided in English, Spanish and Hmong, this decision assistance tool is designed to lead to strategies to prevent or mitigate adverse impacts and unintended consequences on marginalized populations in rapid response effort.

- [Stakeholder Engagement in Rapid Response](#)

Provided in English, Spanish and Hmong, this tool is designed to identify key stakeholders to engage when implementing specific action, policies and guidance.

- CRRTF [provided the public with sector-specific resources](#) to help communities provide support for and address concerns from the following sectors: spiritual advisors, law enforcement and first responders, community health care workers, incarcerated populations, mental and behavioral health professionals, domestic and interpersonal violence advocates, migrant workers, rural residents, communities of color and long-term care providers.

Testimony for “The Disproportionate Impact of COVID-19 on Communities of Color”

The UW Population Health Institute submitted written testimony to the U.S. House of Representatives Ways and Means Committee for a hearing titled [“The Disproportionate Impact of COVID-19 on Communities of Color.”](#) The COVID-19 pandemic is heaping untold suffering across communities, especially communities of color. We cannot thrive as a nation when the factors that contribute to good health are available to some and denied to others. COVID-19 exploits structural racism, leading to a disproportionate impact on communities of color. We must marshal our collective resources to alleviate the disproportionate burden of COVID-19.

County Health Rankings & Roadmaps Webinar Series

During summer of 2020, County Health Rankings & Roadmaps hosted a [special series of five webinars](#) on the ways that communities are responding to COVID-19. A total of 2,602 participants attended the five webinars.

The webinars gave community leaders the opportunity to examine together the inequities exacerbated by the pandemic and to explore evidence-informed strategies to advance equity during the crisis and also during the time of recovery and healing. The series shined a light on the social and economic dimensions of the pandemic and provided historical context to help explain, for example, where and why COVID-19 hotspots emerged. It also provided a forum for impacted communities to share their stories and their innovative solutions with others.



Rural Health Partnerships

Thrive Rural

[Thrive Rural](#) aims to create a shared vision and understanding about what it will take for communities and Native Nations across the rural United States to be healthy places where everyone belongs, lives with dignity and thrives.

An effort of the Aspen Institute Community Strategies Group in partnership with the UW Population Health Institute, with support from the Robert Wood Johnson Foundation, Thrive Rural intentionally brings into focus the convergence of racial, economic and geographic inequity in rural America.

Thrive Rural advances a more connected, cohesive and influential “rural field” dedicated to eliminating concentrated poverty, segregation of opportunity and the negative effects of structural racism and economic restructuring — with the objective of promoting positive gains and more equitable outcomes in and for rural places, especially among low-wealth people and Black, Indigenous and other people of color. By bridging health with community and economic development, we can connect the shared aims, reality and prospects of rural America with *all* of America.

Partnership for Rural Health in Wisconsin

The partnership between the UW Population Health Institute, the Rural Wisconsin Health Cooperative and UW–Madison Division of Extension, focuses on building evidence for innovative collaborations between rural health care organizations and local economic development stakeholders, and applying an evidence-informed Health in All Policies (HiAP) approach to policy development.



MATCH Training Hub

[The Mobilizing Action Toward Community Health \(MATCH\)](#) Training Hub accelerates statewide capacity to create equitable conditions for everyone to be healthy by providing training, coaching and technical assistance to the public health workforce and other communities in Wisconsin. The hub’s programming, resources and tools are designed to 1) integrate equity into systems and processes internally and with partners and 2) engage in continuous learning and quality improvement.

- **MATCH Community Training Projects** provide community leaders, public health practitioners and coalitions with training, coaching and technical assistance that are tailored to specific partner needs. In 2020, MATCH collaborated with partner organizations and expanded training services with the aim of helping them change practice, focus priorities and create conditions for shifting power and supporting shared action on root causes of health and equity.
- **MATCH Workforce Training Programs** help Wisconsin’s public health workforce foster critical competencies in public health and leadership. In 2020, these training programs leveraged the assets of UW–Madison to train, recruit and mentor public health professionals with key health equity skills and knowledge: Wisconsin Population Health Service Fellowship Program; Community Health Worker Engagement; COVID-19 Response Corps; and Region V Public Health.



Evaluation Projects



Pathways to Recovery (a Madison and Dane County Initiative)

The Madison Police Department received a three-year grant to improve public safety and health in Madison and Dane County by diverting individuals with Substance Use Disorder from the criminal justice system through a framework of treatment referral and engagement. The Pathways to Recovery initiative will include proactive naloxone distribution, outreach with quick responses to incidents at the emergency room and the creation of safe stations at fire stations and other public facilities to provide assistance to individuals seeking help. The evaluation includes technical assistance with program development, evaluation plan development and implementation, the use of evaluation results for program improvement and a summary of evaluation results. The grant is funded by the Bureau of Justice Assistance from 2019–2022.

Emergency COVID-19 Project

The Emergency COVID-19 Project is a 16-month project that provides direct treatment services to individuals with Serious Mental Illness (SMI), individuals with Substance Use Disorder (SUD), and individuals with co-occurring SMI and SUD who are impacted by the COVID-19 pandemic. The Emergency COVID-19 Project will also provide direct treatment support to individuals with needs less than SMI, as well as for health care professionals directly impacted by COVID-19, including first responders and professionals working to support others through this crisis. The Emergency COVID-19 Project will incorporate a variety of strategies to provide treatment and support to individuals impacted by the COVID-19 pandemic and will be implemented at several

sites throughout Wisconsin. The UW Population Health Institute will provide technical assistance to support the implementation of the strategies, as well as monitoring and evaluation to document program activities. The project is funded by the U.S. Department of Health and Human Services Substance Abuse and Mental Health Services Administration (SAMHSA).



Saint Paul Mental Health Response Team

The Saint Paul Police Department and the Ramsey County Urgent Care for Adult Mental Health Crisis Program received a three-year grant to implement a Mental Health Response Team serving the city of St. Paul, Minnesota. The Mental Health Response Team will use a co-responder model to connect individuals with mental health issues to services as a way to divert people from the cycle of incarceration. The evaluation includes technical assistance with program development, evaluation plan implementation and assistance with data infrastructure. The grant is funded by the Bureau of Justice Assistance from 2019–2021.

Strategic Priority III: Advancing a Health and Racial Equity Narrative

We cultivate strong narratives and strategic communications to name what it takes to achieve health equity.

True to our objective to “translate research for policy and practice,” the UW Population Health Institute invests in and cultivates both rigorous, scientific research and strategies to apply that research into policy and practice.

Public narrative ultimately shapes what policy changes are possible and helps influence the organizational structures that inform decision making in public health. Shifting the public narrative is therefore an important step toward creating a more just society that promotes health, safety and equity. The long-term process of shifting narrative includes identifying toxic narratives that create barriers to health and health policy, and developing transformational narratives that lift up the values that build more equitable communities. Transformational narratives have the power to provide a new vision for health in Wisconsin and gain public support for policies that impact the social determinants of health.

The Wisconsin Healthiest State Initiative Narrative Workgroup, convened by Mobilizing Action Toward Community Health (MATCH), in collaboration with the nonprofit organizations FrameWorks Institute and Human Impact Partners identified the below narratives.



Toxic narratives that create barriers to health equity work include:

- “We are powerless to transform society to achieve health for all.”
- “Better health is about investing in medical advances and providing services.”
- “Individuals make or break their health and wealth.”

Transformational narratives that can be used to shift toxic narratives include:

- “All people have inherent dignity and autonomy.”
- “Everyone deserves a just opportunity to thrive.”
- “In Wisconsin, we take care of each other.”

By broadening the capacity of public health entities throughout the state to shift the narrative, we can take steps toward lasting change for health equity.



COVID-19 Health Equity Narrative

In order to advance health equity in Wisconsin's COVID-19 response and recovery efforts, the [Community Response and Resilience Task Force \(CRRTF\)](#) authored and disseminated [a suite of messaging resources that build on the foundation of a transformative narrative about health and health equity in Wisconsin](#). These resources provide communities with guidance when communicating about pandemic-related topics with a health equity lens. Resources included talking points to use when considering issues relevant to specific groups, such as residents in rural areas and immigrant communities. Talking points were collaboratively developed with feedback from key stakeholders representing groups most impacted by the topic. Resources were provided in English, Spanish and Hmong. Sample talking points from these resources and the transformative narrative have informed pandemic communications from local health departments in Wisconsin and have been observed in the governor's public remarks.

By further disseminating talking points that lift up a transformative narrative, the task force helped shape a new vision for health in Wisconsin and gained support for COVID-19 policies and practices that center equity.

CRRTF also authored the document [Key Definitions: Building Shared Language](#) to serve as a grounding in shared language across tools being used to embed equity in rapid response efforts during COVID-19. The document explains the difference between terms such as "equity" and "equality," and defines terms such as "power," "resilience" and "stakeholders," when it comes to health equity.



"The COVID-19 pandemic is heaping untold suffering across communities and exposing the longstanding structures, policies and systems that have produced unfair differences in how long and well people live. We must not look away. Rather, we must marshal our collective resources to create a future that leverages existing knowledge, accelerates implementation and catalyzes necessary innovations. The UW Population Health Institute pledges to 'use what we have to do what we can' in this time of upheaval, uncertainty and loss."

Director Sheri Johnson
UW Population Health Institute



Publications

Data Don't Speak for Themselves

Joyner H, Little O.

[Data don't speak for themselves: Putting COVID-19 disparities in context.](#) UW Population Health Institute, 2020.

In early 2020, as more and more states began rolling out COVID-19 data disaggregated by race and ethnicity, the institute quickly recognized the importance of calling attention to how this data was being reported and interpreted.

A resulting article cautioned that reporting raw data on its own is not enough — how information is reported and presented affects public opinion and public health responses — and emphasized the importance of including context and explanation when reporting data on racial/ethnic disparities.

After the article was posted on the institute's newly developed COVID-19 webpage and cited in written testimony to the U.S. House of Representatives Ways and Means Committee for the hearing on "The Disproportionate Impact of COVID-19 on Communities of Color," policymakers took note. The article also received interest from the media.

Local Data for Action

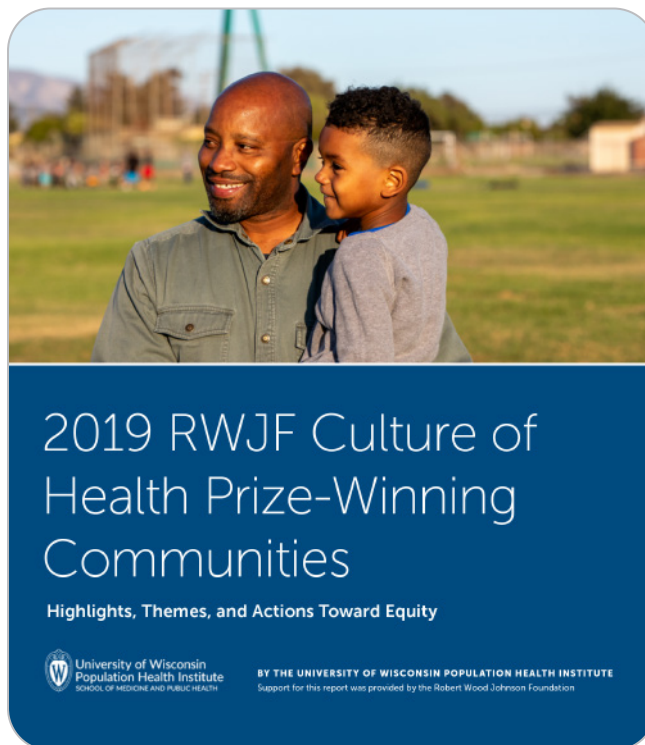
Skalitzky E, Joyner H, Weymouth L.

[Local data for action: Statewide dissemination of school wellness policy evaluations in Wisconsin.](#) UW Population Health Institute, 2020.

This study describes the process the Wisconsin Health Atlas followed to disseminate tailored school wellness policy data reports and interactive dashboards to school districts throughout the state and the results of the statewide dissemination efforts.

Prioritizing the translation of research to practice, the process included collaborating with key stakeholders and partners to provide formative feedback on the dissemination activities.

The electronic and hard copy reports were disseminated to 232 districts through email and U.S. mail. Each district received a tailored report featuring an executive summary, local data for action, personalized policy recommendations, best practices and a unique code to enter into interactive data dashboards to explore additional local, regional and state-level data.



2019 RWJF Culture of Health Prize-Winning Communities: Highlights, Themes and Actions Toward Equity

Acker A, Carroll C, Johnson S, Little O, Schulten E.

[2019 RWJF Culture of Health Prize-Winning Communities: Highlights, themes and actions toward equity.](#) UW Population Health Institute, 2020.

In 2020, the UW Population Health Institute released a report to highlight common themes across the 2019 Robert Wood Johnson Foundation (RWJF) Culture of Health Prize winners with a focus on:

- What strategies are communities using to address social and economic conditions that build a Culture of Health?
- How are leaders, partners and residents working together in comprehensive ways to influence health and equity?

This report describes cross-cutting themes and specific examples from the five 2019 Prize winners — located across the country — to raise awareness about the different strategies and approaches they are using to improve essential community conditions and how they are working collectively to ensure all residents have a fair and just opportunity for health.

2020

ANNUAL
REPORT

Strategic Priority IV: Health and Racial Equity Innovation



We commit to becoming a racially equitable, inclusive organization, joining and supporting other organizations on their journey.

Racism fundamentally shapes our economic, social and physical environments. Sweeping change is needed. Addressing the root causes of poor health requires that we question the systems, policies and practices that create and maintain stark imbalances in power and racial inequities.

As an organization committed to advancing health equity, the UW Population Health Institute continually identifies, challenges and dismantles the structures of our own organization that uphold systems counter to these goals. And we must support others in doing the same.

We all live in a world poisoned by systems of oppression. Learning the truth about our history and taking actions toward healing is the only way to create fair and just conditions for everyone to reach their full potential.

Shared from PublicHealthInsider.com

Racism is a Public Health Crisis Declaration

We continue our work to establish racism as a [public health crisis in Wisconsin](#) and develop opportunities for action for organizations throughout Wisconsin and beyond.

Years of work led by grassroots groups, community-based organizations, government agencies, academic leaders and many others have laid a strong foundation to address racial inequities in Wisconsin.

In October 2017, Mobilizing Action Toward Community Health (MATCH) convened statewide partners at the inaugural Healthiest State Agenda Setting Meeting. The convening supported the collective identification of six statewide health equity priorities, one of which was to declare racism a public health emergency.

In May 2018, the [Wisconsin Public Health Association \(WPHA\)](#) passed a resolution declaring that racism is a public health crisis in Wisconsin and committed to taking action.

Building on this work, in 2020 several partner organizations have worked together to transfer the WPHA resolution content to this [Racism is a Public Health Crisis Sign-On](#). The goal is for organizations and individuals to sign on to the declaration and commit to actions that are tailored to their specific contexts. When organizations and individuals sign on to the declaration they also commit to actions that are tailored to their specific contexts.

In 2020, in response to requests from partners, MATCH began convening a community of practice and surveying signers on their progress related to their commitments to action.

In 2020, [98 organizations and 463 individuals](#) signed on to the declaration. Signers now extend far beyond the state, from New York to California.

Several outlets have reported on this declaration, including [The Pew Charitable Trusts](#) and [PBS Wisconsin](#).

Online Resources

The Racism is a Public Health Crisis [website provides resources](#) that can support an organization in signing on to the declaration, as well as resources organized into categories based on the action steps listed in the declaration. These include an Action Toolkit; Self-Care Resources for Black, Indigenous and people of color (BIPOC); and a Community of Practice for individuals and organizations who have signed on to the Racism is a Public Health Crisis Declaration.

Pre-conference Session

In November 2020, MATCH partnered with the Wisconsin Institute for Public Policy and Service to deliver a pre-conference session, "[Racism is a Public Health Crisis... and what we can do about it](#)" at the 2020 Toward One WI Inclusivity Conference. Approximately 350 attendees participated in the pre-conference session.



COVID-19 Just Recovery Briefs

The Community Resilience and Response Task Force (CRRTF) connected communities, organizations and networks to public health expertise, resources and support about infectious disease management, prioritizing sectors based on inequities that would likely occur due to the nature of the COVID-19 pandemic.

The below briefs provide information, background and context to help communities better understand and integrate issues of equity in their COVID-19 recovery plans.

- [A Just Recovery for Wisconsin: An Overview of Opportunities](#) provides background and context for centering equity in a just recovery from COVID-19 in Wisconsin.
- [A Just Recovery for Racial Equity in Wisconsin](#) provides information on racial disparities and outlines key areas for centering racial equity in COVID-19 recovery efforts.
- [A Just Recovery for Rural Equity in Wisconsin](#) provides information on rural disparities and outlines key areas for centering rural equity in COVID-19 recovery efforts.

Regarding worker health, the Healthy Workers, Thriving Wisconsin report provided communities with a rapid health impact assessment to analyze policies on paid sick leave, workers' compensation changes and direct payments and their impact on worker health in COVID-19 spread.

[Full Report](#) | [Executive Summary](#)

Internal Health Equity Innovation Efforts

Six Lines of Effort

The institute's Health Equity Innovation team outlined six priority lines of effort.

These efforts provide a unified approach to all of the institute's health equity work and enhance its capacities, scholarly contributions and organizational accountability.

These efforts are: Internal Capacity Building; Evaluation and Organizational Assessment; Policy and Practice Change for Equity and Inclusion; Narrative Development; Framework Development; and Scholarship and Research Agenda. Working groups have been assigned to each area.

Academic Lodge

As part of our internal capacity building effort, the institute developed an Academic Lodge as one means of decolonizing our methods and being more inclusive, socially-just and equity-focused in the ways we conduct public health practice and evaluation research with Indigenous communities and Native Nations.

Since November 2020, staff has participated in workshops aimed to build culturally responsive research and evaluation capacities, skills and relationships with Native Nations and Indigenous communities.

Designed in collaboration with the Wisconsin Center for Education Research's [Wisconsin Evaluation Collaborative](#) (WEC), these virtual monthly academic lodges encourage authentic and participatory engagement.

Guided by WEC's Nicole Bowman-Farrell (Lunaape/Mohican), PhD, and others, we work in solidarity as we unlearn, learn and relearn how to do equitable, socially just and culturally responsive work together.

As humans and scholars guided by the principles of the medicine wheel and *nii eelaangoomaatiit* (being in good relations with one another), this collective effort is helping us develop culturally responsive evaluation strategies that include data sovereignty, traditional ways of knowing and more.



University of Wisconsin
Population Health Institute
UNIVERSITY OF WISCONSIN
SCHOOL OF MEDICINE AND PUBLIC HEALTH

2020

**ANNUAL
REPORT**

Appendices



Appendix A

Select Grants | **30**

Appendix B

Partners | **31**

Appendix C

UW Population Health Institute Staff | **34**

Appendix D

Select Publications and Events | **36**



Appendix A: Select Grants

The UW Population Health Institute's funding partners are integral to ensuring the health and wellbeing of all by advancing evidence-informed research for both policy and practice. Below are representative projects from our funding categories.

National, State, Tribal and Community Organizations

Great Lakes Inter-Tribal Council, Inc.

- Family Foundations Home Visiting Program
- Healthy Start
- Tribal Personal Responsibility Education Program

Southwestern Wisconsin Community Action Program

- Improving Behavioral Health Evaluation

Marshfield Clinic Research Foundation

- National Children's Center Evaluation

Wisconsin Council on Medical Education and Workforce

- Medical Education and Workforce Facilitation

Wisconsin Department of Health Services

- COVID-19 Response Contract
- Wisconsin Overdose Data to Action
- Centers for Disease Control and Prevention (CDC) Maternal Mortality Review
- Fit Families – Supplemental Nutrition Assistance Program Education
- Chronic Disease Integration and Coordinated Prevention and Health Promotion
- Mental Health Program Evaluation
- Substance Abuse Prevention
- Project Youth Extension Service
- Partnership for Success
- Tobacco Prevention and Control Program
- Adolescent Health Evaluation
- Medication Assisted Treatment Prescription Drug and Opioid Addiction
- Prescription Drug Overdose Program
- Building Resilience Against Climate Effects
- Injury and Violence Prevention
- Office of Health Informatics Opioid Program
- Strategic Prevention Framework for Prescription Drugs
- Prescription Drug/Opioid Overdose-Related Deaths Prevention Project

Local Agencies

Adams-Friendship School District

- Advancing Wellness and Resilience in Education
- Breaking Down Student Barriers

Ashland County Health and Human Services

- Advancing Wellness and Resilience in Education
- Ashland County Drug Treatment Court

Dane County

- Treatment Alternatives and Diversion (TAD) Pretrial Opiate Diversion

Federal Agencies

Centers for Disease Control and Prevention (CDC)

- CDC Prevention Research Centers

Higher Education – Other

University of Michigan

- Community-based training

Robert Wood Johnson Foundation

- County Health Rankings & Roadmaps/RWJF Culture of Health Prize

UW School of Medicine and Public Health

- UW Population Health Institute Core Funding

UW Affiliated – Foundations and Programs

Wisconsin Partnership Program

- Evidence-Based Health Policy Project
- Making Wisconsin the Healthiest State
- Wisconsin Population Health Service Fellowship Program
- Southeastern Wisconsin Screening, Brief Intervention, and Referral to Treatment

UW Institute for Clinical Translational Research

- Institute for Clinical Translational Research Program Evaluation

UW–Madison Division of Extension

- Wisconsin Healthiest State Summit



Appendix B: Partners

Institute staff members regularly engage with colleagues and partners in programs, applied research, program evaluation, committees, consulting, proposal development and other activities. These partnerships include entities in the public and private sectors, as well as in other departments and centers throughout the university.

County Health Rankings & Roadmaps Partners

500 Cities
 America's Health Rankings
 American Cancer Society
 American Communities Project
 Burness
 Center for Creative Leadership
 City Health Dashboard
 Community Initiatives
 Forum One
 Healthy Places by Design
 Human Impact Partners
 Georgia Health Policy Center
 Institute for Healthcare Improvement/100 Million Healthier Lives
 Measure of America
 National 4-H Council
 National Association of City and County Health Officials (NACCHO)
 National Association of Counties
 National Network of Public Health Institutes
 NeighborWorks America
 New Jersey Health Initiatives (NJHI)
 Pew Charitable Trusts Health Impact Project
 PolicyLink
 Prosperity Now
 RTI International
 Robert Wood Johnson Foundation (RWJF)
 UnidosUS
 United Way Worldwide
 University of Chicago Center Spatial Data Science
 Visible Network Labs

Evaluation Research Partners

Administration for Children and Families
 AIDS Resource Center of Wisconsin
 Alzheimer's & Dementia Alliance of Wisconsin
 Asset Builders
 Baylor University, Department of Public Health

Bureau of Justice Assistance (BJA)
 Centers for Disease Control and Prevention
 Chippewa Falls Area Unified School District
 Community Action, Inc.
 Community Advocates Public Policy Institute
 Dane County District Attorney's Office
 Dane County Health Council
 Eau Claire City-County Health Department
 Foundation for Black Women's Wellness
 Great Lakes Inter-Tribal Council
 Great Rivers HUB
 Green Tier Legacy Communities
 Healthfirst
 Health Care Education and Training
 Health Resources & Services Administration
 Ho-Chunk Nation
 School District of La Crosse
 Lakeland Area Consortium
 City of Madison Police Department
 Marshfield Clinic Research Institute
 Medical College of Wisconsin
 National Cancer Institute
 National Children's Center for Rural and Agricultural Health and Safety
 National Institute of Environmental Health Sciences
 Neighborhood House of Milwaukee
 Neu-Life Community Development
 Public Health Madison & Dane County
 Racine Family YMCA
 Sawyer County Public Health
 Silver Spring Neighborhood Center
 Southwestern Wisconsin Community Action Program (SWCAP)
 State of Wisconsin Women Infant and Children (WIC)
 City of Saint Paul Police Department
 Substance Abuse and Mental Health Services Administration (SAMHSA)
 UniteWI
 United Community Center
 United States Department of Agriculture
 United Way of Dane County
 UW Health
 Vanderbilt University, Department of Human and Organizational Development
 William S. Middleton Memorial Veterans Hospital-Radiology Department



Wisconsin Alliance for Women's Health
 Wisconsin Department of Health Services
 Wisconsin Department of Justice
 Wisconsin Department of Public Instruction
 Wisconsin Department of Transportation

Mobilizing Action Toward Community Health (MATCH) Partners

1000 Friends of Wisconsin
 Aging and Disability Resource Center of Adams, Green Lake and Waushara Counties
 Aspen Institute Community Strategies Group
 Barron County Health & Human Services
 Bellin Health Systems
 Center for Resilient Cities
 Center for Urban Population Health
 Centro Hispano
 Conservation Law Foundation
 Chippewa County Health Department
 Chrysalis
 City of Greenfield Health Department
 City of Milwaukee Health Department
 Community Table Eau Claire
 Dane County Office of Energy & Climate Change
 Data You Can Use
 Department of Justice
 Division of Public Health (State of Wisconsin Department of Health Services)
 Division of Public Health Violence and Injury Prevention
 Division of Public Health Community Conversations
 Division of Public Health Maternal and Child Health Program
 Eau Claire City-County Health Department
 End Child Poverty Campaign
 Ex-incarcerated People Organizing (EXPO)
 Family and Youth Institute
 Forward Community Investments
 Foundation for Black Women's Wellness
 FrameWorks Institute
 Government Alliance on Race & Equity (GARE)
 Government of Dane County
 Great Rivers HUB
 Greenfield Fire Department
 Greenfield Public Library
 Green Tier Legacy Communities

Juneau County Sheriff's Office
 Kids Forward
 LEAP Forward Internship Program — Madison Metropolitan School District
 League of Wisconsin Municipalities
 Marshfield Clinic Health System
 Menikānaehkem Community Rebuilders
 Milwaukee Area Health Education Center (AHEC)
 Milwaukee Area Technical College
 Milwaukee County, Office of the County Executive
 Milwaukee Muslim Women's Coalition
 Milwaukee VA Medical Center
 Movement Voter Project
 Muslim Community and Health Center
 Pepin County Health Department
 Pierce County Health Department
 Price County Health Department
 Public Health Madison & Dane County
 Region V Public Health Training Center
 Richland County Health & Human Services Public Health
 Rock County Public Health Department
 Rural Wisconsin Health Cooperative
 St. Croix County Health & Human Services
 UniteMKE
 Waushara County Health Department
 Weight of the Fox Valley
 West Allis Health Department
 Wisconsin Area Health Education Centers
 Wisconsin Association of Local Health Departments and Boards (WALHDAB)
 Wisconsin Counties Association
 Wisconsin Department of Health Services
 Wisconsin Department of Health Services Chronic Disease Prevention Program
 Wisconsin Department of Health Services Radon Program
 Wisconsin Institute for Public Policy and Service (WIPPS)
 Wisconsin Partners
 Wisconsin Public Health Association
 Wisconsin Public Health Research Network
 Wisconsin Tobacco Prevention and Control Program
 WISDOM
 Wood County Health Department



Robert Wood Johnson Foundation (RWJF) Culture of Health Prize Partners

Burness
 Byrd's Nest, LLC
 Colorado Health Foundation
 Community Science
 Forum One
 Frontline Solutions
 Greater Kansas City Chamber of Commerce
 Healthy Places by Design
 Living Cities
 MMS Education
 Mountain Area Health Education Center
 NeighborWorks America
 Notah Begay III (NB3) Foundation
 Praxis Project
 Project Evident
 Robert Wood Johnson Foundation (RWJF)
 Tandeka, LLC
 Trust for America's Health
 United Way of the Columbia Gorge
 UPROSE

UW Population Health Institute Partners

Aspen Institute
 Federal Reserve Bank of Chicago
 University of California, Riverside

UW Collaborating Entities

Applied Population Lab
 Carbone Cancer Center
 Center for Patient Partnerships
 Center for Urban Population Health
 COWS (formerly Center on Wisconsin Strategy)
 Collaborative Center for Health Equity
 Community-Academic Aging Research Network
 Department of Family Medicine and Community Health,
 Office of Community Health
 Diversity and Inclusion Advocates (DIA) Program
 Division of Extension, Institute for Health & Well-Being
 Division of Extension, Institute of Human Development &
 Relationships
 Extension Waushara County
 Health Disparities Research Scholars Program
 Health Innovation Program
 Institute for Clinical and Translational Research (ICTR)
 Institute for Research on Poverty
 Native American Center for Health Professions
 Neighborhood Health Partnerships
 Nelson Institute for Environmental Studies
 Prevention Research Center
 Recruitment Initiative for Student Employees (RISE)
 School of Human Ecology, Center for Community & Nonprofit
 Studies (CommNS)
 School of Social Work
 Survey of the Health of Wisconsin (SHOW)
 Survey Center
 UWell Partnership Council
 UniverCity Alliance
 Wisconsin Alzheimer's Institute
 Wisconsin Center for Education Research, Wisconsin Evaluation
 Collaborative (WEC)
 Wisconsin Partnership Program
 Wisconsin Public Health Research Network



Appendix C: UW Population Health Institute Staff

UW Population Health Institute Administration

Sheri Johnson, Director
 Marjory Givens, Associate Director
 Bridget Catlin, Senior Scientist
 Ann McCall, Wisconsin Department of Health Services (DHS)
 Research Manager
 Dave Kindig, Professor Emeritus
 Kara Pagano, Administrative Coordinator
 Zachary Rusch, Research Manager

County Health Rankings & Roadmaps

Lawrence Brown, Director
 Sheri Johnson, Acting Director/Principal Investigator
 Elizabeth Blomberg, Population Health Analyst
 Courtney Blomme, Analytics Lead
 Raquel Bournhonesque, Action Learning Coach
 Molly Burdine, Graduate Student Project Assistant
 Ericka Burroughs-Girardi, Action Learning Coach
 Carla Freeman, Action Learning Coach
 Kiersten Frobom, Evidence Analyst
 Lindsay Garber, Network Strategist
 Amanda Gatewood, Special Operations Director, Data and Science
 Keith Gennuso, Research Team Director, Data and Science
 Lael Grigg, Senior Evidence Analyst
 Aliana Havrilla, Action Learning Coach
 Joe Hinton, Action Learning Coach
 Bomi Kim Hirsch, Evidence Analyst
 Kitty Jerome, Team Director, Community Guidance
 Kate Kingery, Deputy Director, Community Transformation
 Kim Linsenmayer, Deputy Director, Operations
 James Lloyd, Program Technology Coordinator
 Molly Murphy, Community Scientist
 Susan Oliveira, IT Support
 Hannah Olson-Williams, Graduate Student Project Assistant
 Eunice Park, Graduate Student Project Assistant
 Justin Rivas, Community Network Strategist
 Jennifer Robinson, IT Support
 Matt Rodock, Rankings Data Analyst
 Anne Roubal, Population Health Analyst
 Jessica Rubenstein, Senior Evidence Analyst
 Attica Scott, Action Learning Coach
 Bianca Silva-Gordon, Graduate Student Project Assistant
 Jessica Solcz, Evidence Analyst

Bobbi Tannenbaum, Program Manager
 Cathy Vos, Operations Associate
 Colleen Wick, Communications Associate
 Molly Wirz, Graduate Student
 Kerry Zaleski, Project Manager, Community Transformation

Evaluation Research

Sara Lindberg, Evaluation Program Director
 Rachel Amos, Associate Research Specialist
 Mozhdeh Bahrainian, Assistant Researcher
 Martin Brubaker-Salcedo, Research Specialist
 Sara Busarow, Associate Researcher
 Lisa Charron, Graduate Student Project Assistant
 Liz Feder, Researcher
 Janae Goodrich, Associate Researcher
 Caleb Hogeterp, Associate Research Specialist
 Kaety Jacobs, Research Specialist
 Hilary Joyner, Associate Researcher
 Lauren Kelly, Graduate Student Project Assistant
 Eli Krebs, Associate Research Specialist
 Robin Lecoanet Moskowitz, Researcher
 Sarah Linnan, Associate Researcher
 Kylie Markeland, Research Specialist
 Paul Moberg, Research Professor
 Jennifer Nuñez, Assistant Scientist
 Andrea Raygor, Assistant Researcher
 Noelia Sayavedra, Assistant Researcher
 Erin Skalitzy, Assistant Researcher
 Sainath Suryanarayanan, Assistant Scientist
 Erin Taber, Associate Research Specialist
 Abra Vigna, Action Researcher and Evaluator
 Aria Walsh-Felz, Assistant Researcher
 Lindsay Weymouth, Assistant Scientist
 Troy Williams, Graduate Student Project Assistant

Mobilizing Action Toward Community Health (MATCH)

Paula Tran Inzeo, MATCH Director
 Salma Abadin, Action Researcher and Evaluator
 Yasamin Aftahi, COVID-19 Policy Research Coordinator
 Selma Aly, Community Coach
 Kristi Anderson, Network Development Lead and Community Coach



Lola Awoyinka, Just Recovery for Racial Equity Initiative Manager
 Molly Clark-Barol, Graduate Student Project Assistant
 Jessi Corcoran, Narrative and Resource Development Coordinator
 Victoria Faust, Action Researcher and Evaluator
 Jonathan Heller, Senior Health Equity Fellow
 Ann McCall, Communications and Project Manager
 Marcia Morales, Community Health Worker Outreach Specialist
 Raymond Neal, Community Coach
 Carleigh Olson, Policy Training and Technical Assistance Coordinator
 Alisa Pykett, Action Researcher and Evaluator
 Maria Schirmer Dewitt, Community Coach
 Sweta Shrestha, Fellowship Program Manager
 Mallory Swenson, Graduate Student Project Assistant
 Alan Talaga, Healthy Wisconsin Leadership Institute (HWLI) COACH Program Lead, Community Coach
 Abra Vigna, Action Researcher and Evaluator
 Lesley Wolf, Community Training Manager

Robert Wood Johnson Foundation (RWJF) Culture of Health Prize

Carrie Carroll, Director
 Angela Acker, Program Manager
 Olivia Little, Translational Researcher
 Erin Schulten, Program Manager

Staff Based at the Wisconsin Department of Health Services

The Population Health Institute has a long history of collaborating with the Wisconsin Department of Health Services to hire and support staff for public health efforts.

Paige Andrews, Violence and Injury Prevention Strategic Planner
 Thomas Bentley, Population Health Researcher
 Lisa Bullard-Cawthorne, Overdose Data to Action Program Planning Coordinator
 Tim Connor, Mental Health Programs Evaluator
 Cecilia Culp, Substance Abuse Prevention Specialist
 Katherine Drewiske, Late Adolescent Health Consultant
 Mariah Geiger, Early Adolescent Health Consultant
 Hannah Gjertson, Maternal Mortality Review Coordinator
 Pamela Imm, Injury and Violence Prevention Epidemiologist
 Nancy Michaud, Tobacco Prevention and Control Program Youth Access Program Coordinator
 Emily Morian-Lozano, Maternal Mortality Review Epidemiologist
 Karen Morris, Maternal Mortality Review Record Abstractor
 Ronald Prince, Overdose Data to Action Epidemiologist

Diksha Ramnani, Syndromic Surveillance Data Analyst
 Spencer Straub, Tobacco Prevention and Control Program Media and Communications Coordinator
 Betsy Swenson, Overdose Data to Action Community Outreach Consultant
 Jennifer Tranmer, Overdose Data to Action Communications Specialist
 Kathryn VerPlanck, Data Quality Specialist
 Rachel Welsh, HIV Care Services Coordinator
 Troy Williams, Overdose Data to Action Community Outreach Consultant
 Ricardo Wynn, HIV Capacity Building Coordinator

Wisconsin Population Health Service Fellows and Placement Sites

2019–2021

Amelia Harju, Wood County Health Department
 Elizabeth Dorsey, UW–Madison Division of Extension Institute for Health and Well-Being
 Matthew Scanlin, Bureau of Communicable Diseases, Wisconsin Department of Health Services
 Melissa Siedl, Milwaukee City Public Health Department
 Mireille Perzan, Office of Health Informatics, Wisconsin Department of Health Services
 Tseten Yangdron, Bureau of Environmental and Occupational Health, Wisconsin Department of Health Services

2020–2022

Ben Andert, Bureau of Community Health Promotion, Wisconsin Department of Health Services
 Taylor Davis, Public Health Madison & Dane County
 Emily Dejka, Eau Claire City - County Health Department
 Brie Godin, Office of Preparedness and Emergency Health Care, Wisconsin Division of Public Health
 Emily Lynch, Office of Policy and Practice Alignment, Wisconsin Division of Public Health and Department of Justice
 Amanda Richman, Office of Health Strategy in the Policy, Innovation and Engagement Branch, City of Milwaukee Health Department
 Kong Xiong, Maternal and Child Health Unit, Wisconsin Division of Public Health



Appendix D: Select Publications and Events

Select Publications

- Acker A, Carroll C, Johnson S, Little O, Schulten E. [2019 RWJF Culture of Health Prize-winning communities: Highlights, themes and actions toward equity](#). University of Wisconsin Population Health Institute, 2020.
- Brunner MC, Sheehan SE, Yanke EM, Sittig DF, Safdar N, Hill B, Lee KS, Orwin JF, Vanness DJ, Hildebrand CJ, Bruno MA, Erickson TJ, Zea R, Moberg DP. [Joint design with providers of clinical decision support for value-based advanced shoulder imaging](#). *Applied Clinical Informatics*. 2020;11(1):142-152. doi:10.1055/s-0040-1701256.
- Bryant A, Walsh-Felz A, Jacklitz, Lindberg, S. [The impact of a community resource navigator program on patient trust](#). *Wisconsin Medical Journal*. 2020;119(3) 190-193. doi:10.1055/s-0040-1701256.
- Givens, ML, Catlin, BB, Johnson, SP, Pollock, EA, Faust, VN, Inzeo, PT, Kindig, DA. [What do we know about the drivers of health and equity?](#) A narrative review of graphic representations. *Health Equity*. 2020;4(1), 446-462. doi:10.1089/heq.2020.0013.
- Healthy and Equitable Community Investment Work Group. [Healthy and equitable community investment: Recommendations for the emerging ecosystem of tools, approaches, and data sources to support community investment's impact on health and equity in communities](#). Healthy and Equitable Community Investment Workgroup Final Report. Conservation Law Foundation, June 2020.
- Johnson S, Gold MR, Baciú A. [Rethinking the leading health indicators for Healthy People 2030](#). *JAMA Health Forum*. Published online May 20, 2020. doi:10.1001/jamahealthforum.2020.0426.
- Johnson S, Golden RN. [A health equity mindset](#). *Wisconsin Medical Journal*. 2020;119(2):139-140.
- Joyner H, Little O. [Data don't speak for themselves: Putting COVID-19 disparities in context](#). University of Wisconsin Population Health Institute, 2020. 2021;121(5). doi:10.1016/j.jand.2020.08.082.
- Joyner H, Weymouth L, Skalitzy E, Hillert S. [Wisconsin school wellness policies after federal legislation change: Understanding key mechanisms of policy improvement](#). *Journal of the Academy of Nutrition and Dietetics*; forthcoming.
- Nguyen TQ, Michaels IH, Bustamante-Zamora D, et al. [Generating subcounty health data products: Methods and recommendations from a multistate pilot initiative](#). *Journal of Public Health Management and Practice*. 2021;27(1): E40-E47. doi: 10.1097/PHH.0000000000001167.
- Rolland B, Scholl L, Suryanarayanan S, Hatfield P, Judge K, Sorkness C, . . . Brasier A. [Operationalization, implementation, and evaluation of collaboration planning: A pilot interventional study of nascent translational teams](#). *Journal of Clinical and Translational Science*. 2020;1-20. doi:10.1017/cts.2020.515
- Skalitzy E, Joyner H, Weymouth L. [Local data for action: Statewide dissemination of school wellness policy evaluations in Wisconsin](#). *Health Promotion Practice*. 2020. doi:10.1177/1524839920973650.
- Tanner-Smith EE, Nichols LM, Loan CM, Finch AJ, Moberg DP. [Recovery high school attendance effects on student delinquency and substance use: the moderating role of social problem solving styles](#). *Prevention Science*. 2020;21, 1104–1113. doi:10.1007/s11121-020-01161-z.
- Thakur T, Barnett JH, LeCaire T, Bersch A, Peppard P, Malecki K, Moberg DP. [Prescribed opiate use in Wisconsin from 2008-2016: Findings from the Survey of the Health of Wisconsin \(SHOW\)](#). *Wisconsin Medical Journal*. 2020;119(2):102-109.
- Vigna, AJ, Connor, T. [The 2019 behavioral health gaps report for the State of Wisconsin](#). Madison, WI: University of Wisconsin Population Health Institute, October 2020.
- Linnan S, Walsh-Felz A, Skalitzy E. [Strategic prevention framework partnerships for success 2015 final evaluation report](#). Madison, WI: University of Wisconsin Population Health Institute, September 2020.



Select Events

Inzeo, PT, Aly, S, Anderson, K. "Racism is a public health crisis... and what we can do about it" [Pre-Conference Session]. Toward One Wisconsin Inclusivity Conference; November, 2020; virtual.

Little, O. "Operationalizing equity: How are communities creating conditions that promote better health and opportunity for all?" Interdisciplinary Association for Population Health Research annual conference; September, 2020; virtual.

Wolf L, Neal R, Talaga A. "From roots to results: a qualitative case study of the evolution of a public health leadership institute building capacity in collaborating for equity and justice;" Toward One Wisconsin Inclusivity conference; November, 2020; virtual.

Community of Practice Sessions: "Racism is a Public Health Crisis Declaration"

These sessions supported local decision-makers and signers to share lessons and challenges related to advancing racial equity and in particular, the contexts of advancing racial equity during COVID-19.

- June 29: "Strategizing around statewide policies"
- July 13: "Strategizing around organizational action"
- July 27: "Strategizing around individual action"
- August 20: "Spotlight on organizational action with UW Health"
- September 21: "Spotlight on community action with Kenosha County"
- October 21: "Spotlight on policy change with Blue Cross-Blue Shield of Minnesota"

"Racism is a Public Health Crisis: What does this mean and opportunities for action" to UW Madison Campus Wellness Initiative, October 9, 2020.

This session described why racism is a public health crisis, how the dual public health crises of racism and COVID-19 are furthering harm, and opportunities for action.

"Racism is a Public Health Crisis ...and what we can do about it" Pre-conference on Racial Equity, November 11, 2020, in partnership with Wisconsin Institute for Public Policy and Service for the Toward One WI Conference Session.

"Racism is a Public Health Crisis: What does this mean and opportunities for action" to UW Institute for Clinical and Translational Research (ICTR) Community-Action Partnerships Education Network, November 18, 2020.

This session described why racism is a public health crisis, how the dual public health crises of racism and COVID-19 are furthering harm, and opportunities for action for scholars.

2020 County Health Rankings & Roadmaps [Webinars](#)

- March 23: "[Making the most of the 2020 County Health Rankings](#)"

[Take Action Series](#)

- January 28: "Why the census matters to health equity"
- June 16: "Health and wealth: Using data to address income inequality"
- September 22: "Spotlight on rural: Local efforts at the intersection of health and housing"
- October 12: "Building equity into your network of partners"
- November 17: "Using law and policy to create equitable communities"
- December 15: "Resident engagement to achieve racial equity"

[Special In-Depth Topics](#)

- January 23: "Building resident engagement in the delta region"
- August 25: "Green communities and equitable economic development: Improving wellbeing through sustainability, broad inclusivity and innovative collaboration"

[COVID-19 Series](#)

- May 21: "Exploring guaranteed income as a strategy to address income inequality"
- June 25: "COVID-19: Disproportionate impact on Black communities"
- July 9: "COVID-19: Disproportionate impact on Navajo nation and tribal communities"
- July 21: "U.S. COVID Atlas: Exploring data to move to action"
- August 13: "Responding to crisis in the Latino population with an equity lens"

Putting County Health Rankings into Action

- May 12: "[Place Matters](#)"

[Rankings 101](#)

- April 7: "County Health Rankings & Roadmaps"



Contact

Mailing Address:

UW Population Health Institute
University of Wisconsin School of Medicine and Public Health
575 WARF Building
610 Walnut Street
Madison, WI 53726

Website: <http://uwphi.pophealth.wisc.edu>

Phone: 608-263-6294

Fax: 608-262-6404

Email: UWPHI@med.wisc.edu

Twitter: [@UWiscPHI](https://twitter.com/UWiscPHI)

LinkedIn: University of Wisconsin Population Health Institute



University of Wisconsin
Population Health Institute

UNIVERSITY OF WISCONSIN
SCHOOL OF MEDICINE AND PUBLIC HEALTH